

# VERIS

Live the Future

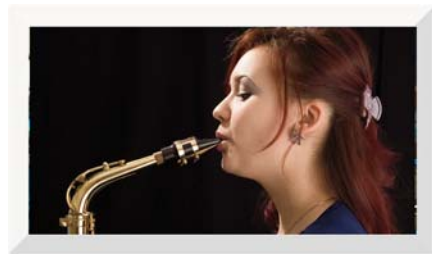


**Community**<sup>®</sup>





**V**ERIS is a stunning collection of loudspeakers that provides system designers, contractors and sound engineers with the forward thinking tools they need to solve challenging acoustical problems.



**E**legantly styled to meet modern architectural requirements, the VERIS line comprises ten models that range from small format enclosures for distributed systems and ancillary delay applications, to moderate sized three-way systems for demanding FOH requirements.



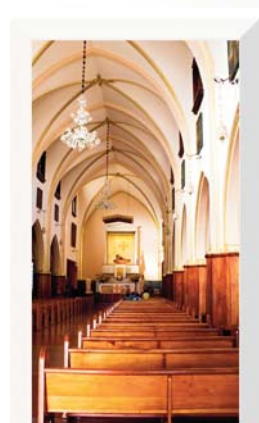
**R**igging and mounting brackets are available in a wide range of styles permitting the system designer to create clusters and arrays with hardware available from stock (please see Accessories). The unique VERIS yoke bracket may be mounted at 0, 10, or 20 degrees of upward or downward inclination, letting you put the sound field where you want it.



**I**nstallers will appreciate the choice of horn patterns on the larger VERIS models, allowing precise alignment between the room geometry and the desired coverage angle (see Specifications for details). Each of the four smaller models may be ordered with an optional internal autoformer for 70V/100V distributed systems.



**S**o when you need top quality sound for restaurants, pubs, health clubs, worship centers, theatres, auditoria and concert halls, VERIS loudspeakers will complement your system designs without taxing your budget. Plan your systems around VERIS and Live the Future!



# VERIS

Live the Future





# VERIS Turns Challenging Acoustical Problems Into Simple Everyday Solutions!

## UNIFORM DESIGN

VERIS loudspeakers were developed as a family. A uniform design approach provides for consistent appearance throughout the line, together with harmonized sonic characteristics.

When you select larger models for front of house, and smaller models as ancillary delay speakers to cover balcony, side, and underbalcony areas, you can be assured that the sound quality will remain the same throughout the room.

With ten basic models to choose from, and the four larger models offering a choice of horn patterns, it's easy to match an appropriate VERIS loudspeaker to every section of your venue.

## CONTROLLED COVERAGE

Nothing about sound system design is more important than directing the sound field where you want it, to the listeners.

Keeping unnecessary sonic energy off wall, floor and ceiling surfaces is the first step in producing clear and intelligible results.

VERIS handles this with ease.

Community's world famous pattern-control horn technology, combined with a rich assortment of rigging and mounting brackets, enables the system designer to create clusters and arrays that precisely direct the sound field where it's needed, in even the most challenging acoustical environments.

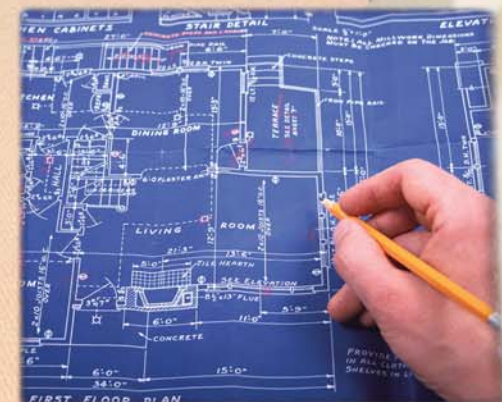
## VERSATILITY

Whether you're designing a powerful music system for a contemporary worship center, or a distributed system for a shopping mall, there's a VERIS product that fits. All models are available in white or black at no extra charge, and the 6, 8, 26 & 28 come with yoke brackets as standard items. Additionally, these same four models may be ordered with an optional internal low-loss, low-distortion autoformer for 70V and 100V distributed system designs.



## CONNECT WITH VERIS

Music and speech are elemental to the human experience. A VERIS-powered system enhances the connection between the presenter and his or her audience, bringing depth to the occasion. Whether it's the inspiration of the spoken word, the experience of coming closer to the music, or the excitement of high-impact dance beats, VERIS provides an acoustic intimacy like never before.

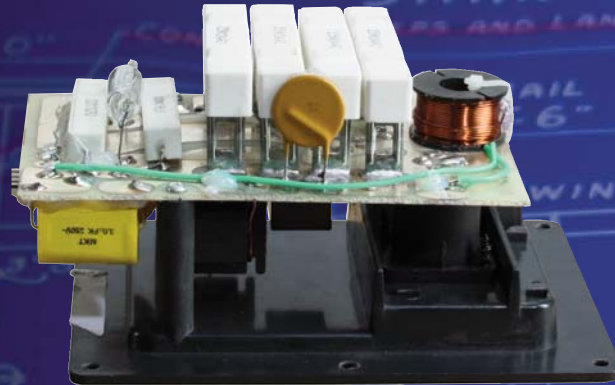




# Advanced Technologies Provide Power, Musicality, and Intelligibility

## ADVANCED ELECTRONICS

Sophisticated internal electronics are an important part of why VERIS loudspeakers sound so good. Our circuit designs feature carefully engineered crossovers coupled with our exclusive DNYA-TECH™ multi-stage protective limiter. Using only the power of the amplifier, DYNA-TECH actively prevents driver damage under abusive operating conditions.



## HIGH FREQUENCY DRIVER TECHNOLOGY TAKEN TO THE LIMITS

Community's UC1 High Frequency compression driver represents a major advance in electro-acoustic technology. Featuring ring-radiator topology and a unique, non-metallic diaphragm, the UC1 provides extended high frequencies, unparalleled transient response, and radically reduced distortion over that of conventional drivers that use brittle metallic diaphragms.

The voice coil is gap treated with Ferrofluid™, a viscous dampening fluidic compound that further lowers distortion. Simultaneously, the fluid reduces power compression and increases power handling by improving the coefficient of heat transfer between the diaphragm and the magnet structure. The result is a smooth and effortless sound quality that you literally have to hear to believe!



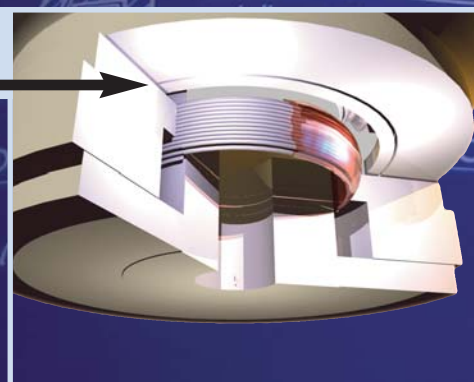
## CONE DRIVER TECHNOLOGIES

Community cone drivers employ multiple engineering advancements for unmatched performance.

- A carbon ring bonded to the juncture of the cone and the surround stiffens the cone without adding appreciable mass. This reduces distortion and allows the active piston area to be made 30% larger than conventional designs, providing greater power and efficiency. In addition, the deep pleated surround reinforced by the carbon ring permits increased excursion without cone damage.
- Our patented Cool-Coil™ technology actively evacuates heat, which in turn reduces power compression and increases reliability.
- Ferrofluid™, a thermally conductive fluidic treatment, conducts heat away from the voice coil while dampening distortion-inducing resonances. (shown in this illustration)

Used separately and in combination\*, these technologies result in higher power handling, increased service life, and most importantly vastly improved sound quality.

\*Ferrofluid is used in mid-range cone drivers and high-frequency compression drivers.



## 70V and 100V SYSTEMS

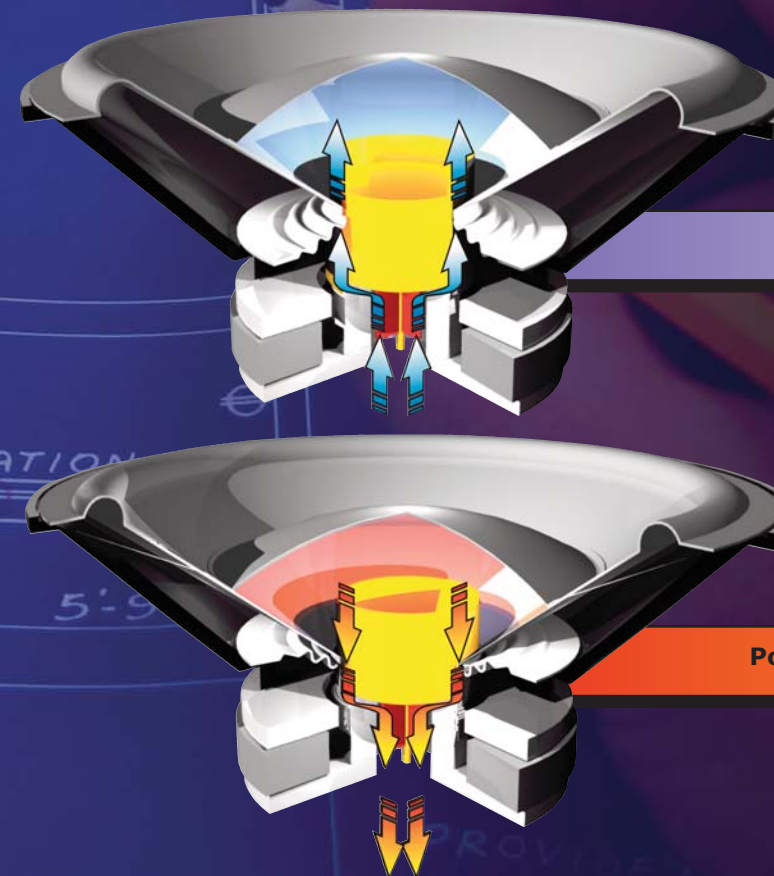
VERIS models 6, 8, 26 and 28 may be ordered with an optional low-loss, low distortion internal autoformer for 70V and 100V distributed systems.

At 70V the taps are 12.5W, 25W, 50W & 100W for the 6T and 8T models, and 25W, 50W, 100W and 200W for the 26T and 28T models. The taps provide a 9 dB range in 3 dB increments.

## HAND-LAID FIBERGLASS WAVEGUIDES

Our geometrically correct hand-laid fiberglass waveguides used on larger VERIS models are famous throughout the world for letting you put the sound where you want it. Their superior pattern control gives you greater freedom in loudspeaker placement, plus significantly increased gain-before-feedback.

Durable fiberglass construction holds up under day-in and day-out use, while the natural characteristics of glass lamination eliminate the distortion-causing resonances inherent in other horn materials.



## COMMUNITY'S PATENTED COOL-COIL™ TECHNOLOGY

Cool air is pulled in over the thermally conductive voice coil former assembly

- Self-sustaining airflow
- Lower operating temperatures
- Reduced power compression
- Improved long-term efficiency
- Greater power handling

Power-robbing heat is drawn away from the voice coil



## A Rich Assortment of Accessories Make

### Seat Track Kit (Model No. STKIT)

All VERIS models may be flown quickly and easily using an optional bolt-on Seat Track Kit.

The STKIT provides a safe and convenient means of suspending a single enclosure. By purchasing multiple kits, one enclosure may be flown over another. Seat Track is ideally suited for installations in which the loudspeakers may need to be removed seasonally, or re-positioned from time to time to accommodate varying room configurations.

### Versatilt Bracket (Model No. VB-VST)

The VB-VST allows for precise installation of a single full-range VERIS loudspeaker from the ceiling. It includes the VB-TILT rotational device shown below, a hang bracket that fastens to the top or bottom of the enclosure, and the Ceiling Mount Kit (CMKIT) shown on the opposite page. Available in black or white, it can be used with any full-range VERIS loudspeaker.

### Tilting Bracket (Model No. VB-TILT)

The TILT bracket allows for precise angling of a VERIS loudspeaker. Available in black or white, the VB-TILT is a two-part rotational device that can be used to fasten one enclosure to another; to fasten an enclosure to the CMKIT Ceiling Mount Kit; or to fasten to a yoke bracket permitting one loudspeaker to be angled in relation to another in two axes. The VB-TILT can be used with all full-range VERIS enclosures. Note: yokes are sold separately for VERIS models 12/15/32/35. A yoke is included with all VERIS 6/26/8/28 models.

### Eyebolt Kits

#### (Model Nos. M10EYBLTKIT, M6EYBLTKIT)

Suspend your VERIS loudspeakers safely and easily. Kits may be ordered in either M10 size or M6 size. Four eyebolts are included in each kit.



## VERIS Installations Quick, Safe, and Easy

### VERIS Handle & Stand Socket (Model No. V-HSS)

The V-HSS accessory for VERIS 6/26/8/28 models attaches to the loudspeaker enclosure's rear OmniMount™ bolt pattern to create a stand socket mount & convenient carrying handle. It is zinc plated and made of black powder-coated steel. Perfect for A/V professionals and event PA. Available in black only.

### Vertical Flying Kit (Model No. VFKIT)

The VFKIT for VERIS 12/15/32/35 full-range loudspeakers allows two same-size enclosures to be flown at 45 and 60 degree splay angles. To array three same-size enclosures, use two VFKIT's. To array four same-size enclosures, use three VFKIT's, and so on. Available in black or white.

### Ceiling Mount Kit (Model No. CMKIT)

The Ceiling Mount Kit creates a hang point from a ceiling surface. The CMKIT consists of a ceiling mount bracket and a bolt that fastens to a yoke bracket or to one of several optional loudspeaker brackets. It can be used with all full-range VERIS loudspeakers. Note: the yoke is sold separately for VERIS 12/15/32/35; yokes are included with VERIS 6/26/8/28 models. Available in black or white.

### Yoke Brackets

#### (Model Nos. VB-Y12, VB-Y15, VB-Y32, VB-Y35)

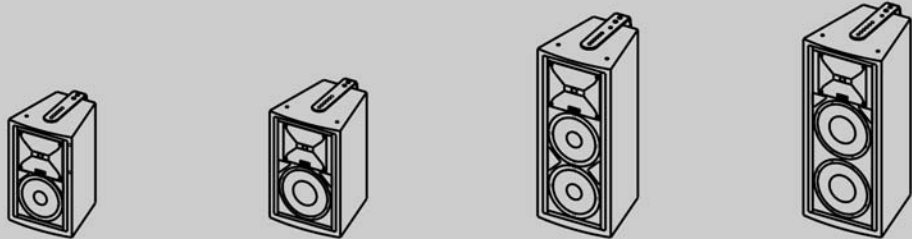
Optional yoke brackets for the larger full-range VERIS models 12/15/32/35 allow for direct horizontal mounting of the loudspeaker to a wall or ceiling. This unique bracket also permits vertical mounting with a selection of 0°, 10°, or 20°, of either upward or downward inclination. Note: yokes are included with all VERIS 6/8/26/28/ models. Available in black or white.



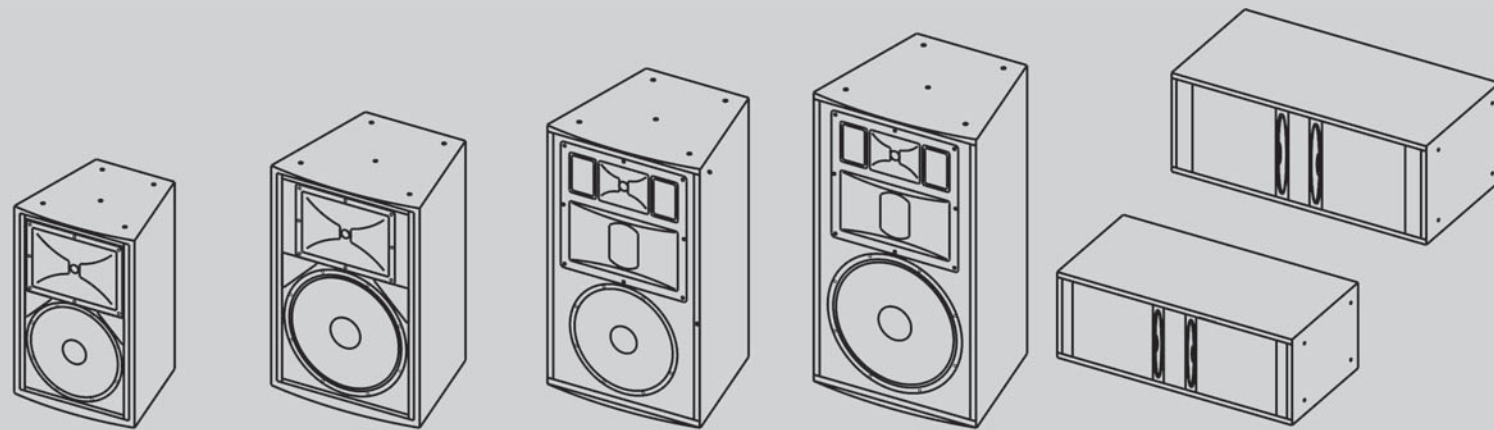


# TECHNICAL

# SPECIFICATIONS



Model	VERIS 6	VERIS 8	VERIS 26	VERIS 28
Loudspeaker Type	Two-way, full-range, trapezoidal, vented bass	Two-way, full-range, trapezoidal, vented bass	Two-way, full-range, trapezoidal, vented bass	Two-way, full-range, trapezoidal, vented bass
Driver Complement	LF: 1 x 6" HF: 1 x 3/4"	LF: 1 x 8" HF: 1 x 3/4"	LF: 2 x 6" HF: 1 x 3/4"	LF: 2 x 8" HF: 1 x 3/4"
Nominal Dispersion (H x V)	90° x 70°	90° x 70°	90° x 70°	90° x 70°
Operating Range	100 Hz - 18 kHz	90 Hz - 18 kHz	70 Hz - 18 kHz	70 Hz - 18 kHz
Frequency Response	125 Hz - 10 kHz (± 3 dB)	100 Hz - 10 kHz (± 4.5 dB)	90 Hz - 10 kHz (± 3 dB)	90 Hz - 10 kHz (± 4 dB)
Max Input Ratings	100W RMS (28.3V) 250W PGM 500W PEAK	150W RMS (34.6V) 375W PGM 750W PEAK	200W RMS (28.3V) 500W PGM 990W PEAK	300W RMS (34.6V) 750W PGM 1485W PEAK
Sensitivity 1W/1m (free space SPL) 125 Hz - 10 kHz 1/3 octave bands	90 dB	91 dB	92 dB	93 dB
Maximum SPL (cont. / peak)	110 dB / 117 dB	113 dB / 120dB	115 dB / 122dB	118 dB / 125 dB
Nominal Impedance	8 ohms	8 ohms	4 ohms	4 ohms
Rigging Provisions	(9) M6 threaded rigging fittings (4) M6 threaded fittings for OmniMount™ 30 bolt pattern; yoke bracket included	(9) M6 threaded rigging fittings (4) M6 threaded fittings for OmniMount™ 30 bolt pattern; yoke bracket included	(9) M6 threaded rigging fittings (4) M6 threaded fittings for OmniMount™ 30 bolt pattern; yoke bracket included	(9) M6 threaded rigging fittings (4) M6 threaded fittings for OmniMount™ 30 bolt pattern; yoke bracket included
Construction	18mm, 11-ply cross-laminated birch	18mm, 11-ply cross-laminated birch	18mm, 11-ply cross-laminated birch	18mm, 11-ply cross-laminated birch
Finish	Catalyzed polyester two-part paint, available in black or white	Catalyzed polyester two-part paint, available in black or white	Catalyzed polyester two-part paint, available in black or white	Catalyzed polyester two-part paint, available in black or white
Height	15.5 in / 395 mm	17.0 in / 433 mm	22.5 in / 572 mm	25.5 in / 649 mm
Width	9.8 in / 249 mm	11.3 in / 287 mm	9.8 in / 249 mm	11.3 in / 287 mm
Depth	10.1 in / 258 mm	11.7 in / 298 mm	10.1 in / 258 mm	11.7 in / 298 mm
Net Weight	16.5 lbs / 7.5 kg 19 lbs / 8.6 kg when ordered with Autoformer	21.5 lbs / 9.8 kg 24.5 lbs / 11.1 kg when ordered with Autoformer	22.5 lbs / 10.2 kg 26.5 lbs / 12.0 kg when ordered with Autoformer	31 lbs / 14.1 kg 35 lbs / 15.9 kg when ordered with Autoformer



VERIS 12	VERIS 15	VERIS 32	VERIS 35	VERIS 210S	VERIS 212S
Two-way, full-range, trapezoidal, vented bass	Two-way, full-range, trapezoidal, vented bass	Three-way, full-range, trapezoidal, vented bass	Three-way, full-range, trapezoidal, vented bass	Dual driver subwoofer, rectangular, vented bass	Dual driver subwoofer, rectangular, vented bass
LF: 1 x 12" HF: 1 x 1"	LF: 1 x 15" HF: 1 x 1"	LF: 1 x 12" MF: 1 x 6.5" HF: 1 x 1"	LF: 1 x 15" MF: 1 x 6.5" HF: 1 x 1"	LF: 2 x 10"	LF: 2 x 12"
VERIS 1264: 60° x 40° VERIS 1296: 90° x 60°	VERIS 1564: 60° x 40° VERIS 1596: 90° x 60°	VERIS 3264: 60° x 40° VERIS 3294: 90° x 40°	VERIS 3564: 60° x 40° VERIS 3594: 90° x 40°	360° x 180°	360° x 180°
60 Hz - 18 kHz 90 Hz - 13 kHz (± 3 dB)	60 Hz - 18 kHz 80 Hz - 13 kHz (± 3 dB)	60 Hz - 18 kHz 80 Hz - 13 kHz (± 3.5 dB)	55 Hz - 18 kHz 70 Hz - 13 kHz (± 4 dB)	40 Hz - 500 Hz 50 Hz - 150 Hz (± 3dB)	37 Hz - 500 Hz 50 Hz - 125 Hz (± 1.5)
200W RMS (40V) 500W PGM 990W PEAK	200W RMS (40V) 500W PGM 990W PEAK	200W RMS (40V) 500W PGM 990W PEAK	200W RMS (40V) 500W PGM 990W PEAK	300W RMS (34.6V) 750W PGM 1485W PEAK	300W RMS (34.6V) 750W PGM 1485W PEAK
VERIS 1264: 99 dB VERIS 1296: 97 dB 100 Hz - 12.5 kHz (1/3 octave bands)	VERIS 1564: 100 dB VERIS 1596: 99 dB 100 Hz - 12.5 kHz (1/3 octave bands)	VERIS 3264: 100 dB VERIS 3294: 98 dB 100 Hz - 12.5 kHz (1/3 octave bands)	VERIS 3564: 101 dB VERIS 3594: 99 dB 100 Hz - 12.5 kHz (1/3 octave bands)	96 dB (1W/1m half-space)	98 dB (1W/1m half-space)
VERIS 1264: 122 dB / 129 dB VERIS 1296: 120 dB / 127 dB	VERIS 1564: 123 dB / 130 dB VERIS 1596: 122 dB / 129 dB	VERIS 3264: 123 dB / 130 dB VERIS 3294: 121 dB / 128 dB	VERIS 3564: 124 dB / 131 dB VERIS 3594: 122 dB / 129 dB	121 dB / 128 dB (1W/1m half-space)	123 dB / 130 dB (1W/1m half-space)
8 ohms	8 ohms	8 ohms	8 ohms	4 ohms	4 ohms
(13) M10 threaded rigging fittings (4) M8 threaded fittings for OmniMount™ 60 bolt pattern	(13) M10 threaded rigging fittings (4) M8 threaded fittings for OmniMount™ 60 bolt pattern	(13) M10 threaded rigging fittings (4) M8 threaded fittings for OmniMount™ 60 bolt pattern	(13) M10 threaded rigging fittings (4) M8 threaded fittings for OmniMount™ 60 bolt pattern	(8) M10 threaded rigging fittings, four located on each end panel	(8) M10 threaded rigging fittings, four located on each end panel
18mm, 11-ply cross-laminated birch	18mm, 11-ply cross-laminated birch	18mm, 11-ply cross-laminated birch	18mm, 11-ply cross-laminated birch	18mm, 11-ply cross-laminated birch	18mm, 11-ply cross-laminated birch
Catalyzed polyester two-part paint, available in black or white	Catalyzed polyester two-part paint, available in black or white	Catalyzed polyester two-part paint, available in black or white	Catalyzed polyester two-part paint, available in black or white	Catalyzed polyester two-part paint, available in black or white	Catalyzed polyester two-part paint, available in black or white
23.9 in / 607 mm 15.4 in / 390 mm 14.3 in / 362 mm 36.5 lbs / 16.6 kg	27.2 in / 690 mm 18.4 in / 467 mm 15.9 in / 404mm 47 lbs / 21.3 kg	29.3 in / 744 mm 17.4 in / 441 mm 15.4 in / 390 mm 52.5 lbs / 23.8 kg	32.4 in / 823 mm 18.4 in / 467 mm 15.9 in / 404mm 58 lbs / 26.3 kg	11.9 in / 303 mm 32.7 in / 830 mm 15.9 in / 404 mm 55.5 lbs / 25.2 kg	13.9 in / 354 mm 35.9 in / 912 mm 17.9 in / 455 mm 67.5 lbs / 30.6 kg



# VERIS

Live the Future

**Community**

333 East Fifth Street, Chester, PA, USA 19013-4511  
TEL: (800) 523-4934 • (610) 876-3400 • FAX: (610) 874-0190  
[www.communitypro.com](http://www.communitypro.com)