

CLOUD and I/O Series



Premiere Ceiling
and
Surface Mount Loudspeakers

CLOUD12

Powerful 12" Ceiling Loudspeakers

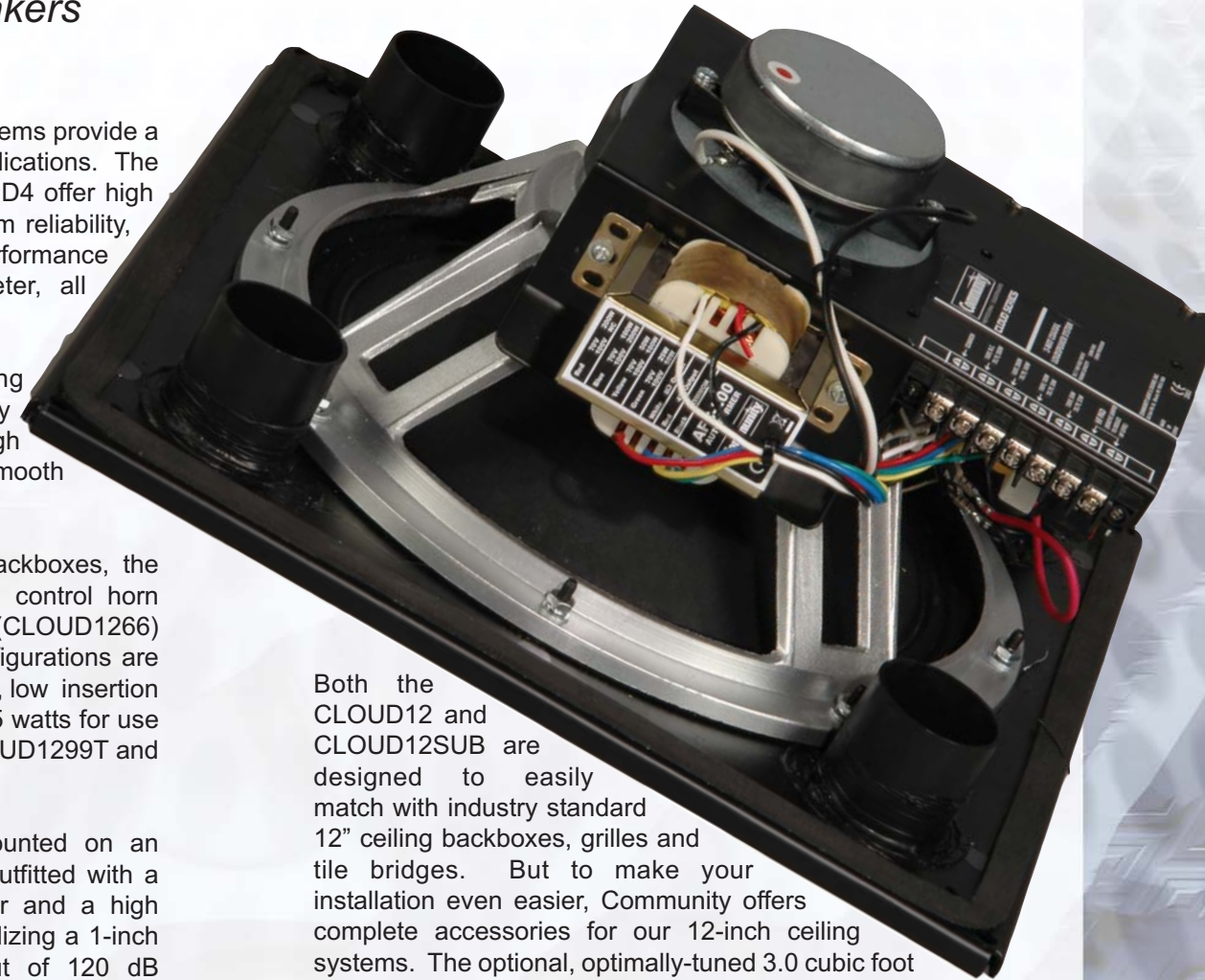
The Community CLOUD Series loudspeaker systems provide a comprehensive range of solutions for ceiling applications. The CLOUD12, CLOUD12SUB, CLOUD6 and CLOUD4 offer high quality speech and music reproduction, long-term reliability, and ease of installation. To provide optimum performance and consistent coverage with minimal diameter, all employ coaxial drive unit designs.

The powerful, full-range CLOUD12 ceiling loudspeakers from Community are specifically designed for high-ceiling applications requiring high power handling, high fidelity, low distortion and smooth response.

Engineered for use within industry standard backboxes, the CLOUD12 is offered with a 90° x 90° pattern control horn (CLOUD1299) or 60° x 60° pattern control horn (CLOUD1266) for standard 8 ohm operation. Both model configurations are additionally available with a premium, high quality, low insertion loss 200W autoformer with taps at 200/100/50/25 watts for use with 70V and 100V distributed line systems (CLOUD1299T and CLOUD1266T).

Employing a coaxial two-way design and mounted on an integral baffle, CLOUD12 ceiling systems are outfitted with a single 12-inch cast frame low frequency driver and a high frequency section with adjustable attenuation utilizing a 1-inch compression driver. With a maximum output of 120 dB SPL/127 dB SPL (peak) for the CLOUD1266 and 118 dB SPL/125 dB SPL (peak) for the CLOUD1299, and input rated at 500W program, the two-way devices exceed a bandwidth of 60 Hz - 18 kHz and come equipped with Community's proprietary DYNA-TECH™ protection circuitry. Quick and easy to install using a standard baffle mount and four 8/32 mounting screws provided with each unit, the loudspeakers reliably perform with smooth, full-range response, clarity, and tightly defined coverage.

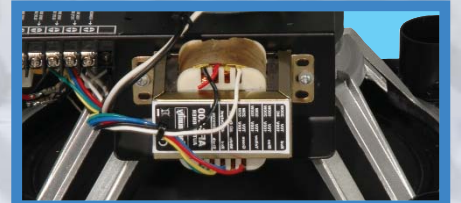
The CLOUD12SUB ceiling subwoofer system offers true low frequency performance and power for high quality music installations and public address in large venues. Impressive bass and bandwidth performance can be achieved from permanently installed ceiling locations by partnering the CLOUD12SUB with Community's CLOUD12 full-range loudspeakers. The CLOUD12SUB is also available in a 200 watt, 70V/100V transformer version (model CLOUD12SUB-T), and can be used with any full-range surface mount or ceiling loudspeaker configuration for enhanced, extended low bass output.



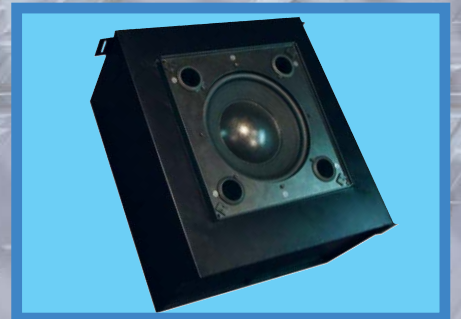
Both the CLOUD12 and CLOUD12SUB are designed to easily match with industry standard 12" ceiling backboxes, grilles and tile bridges. But to make your installation even easier, Community offers complete accessories for our 12-inch ceiling systems. The optional, optimally-tuned 3.0 cubic foot C12BB3 is the stiffest and strongest backbox available with 23 welded-in steel reinforcing ribs. Painted in low luster black, the C12BB3 backbox also includes knockouts for hard pipe or flex conduit and four rear-mounted 1/4-20 welded-in nuts so that each enclosure can be flown from optional forged eyebolts (Community's 1/4EYBLTKIT). An attractive square perforated painted steel grille is also offered, together with 24", 30" and 48" channel rails.



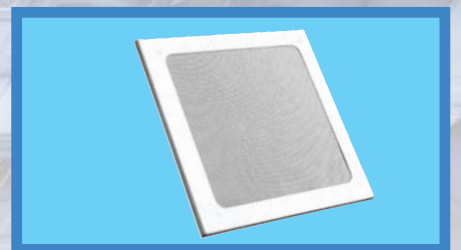
CLOUD1266 and CLOUD1299 full-range ceiling loudspeakers feature rugged 12" cast frame LF drivers and are offered in 60° x 60° or 90° x 90° dispersion patterns, with or without a built-in autoformer.



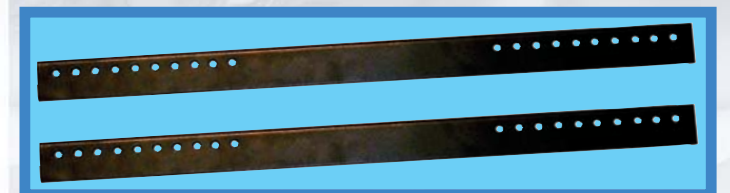
High power, premium quality 200W autoformer for 70V/100V operation. The autoformer exhibits inherently lower distortion and lower insertion loss than an equivalent rated transformer. Autoformers are also less prone to magnetic core saturation, providing better linearity under peak operating conditions.



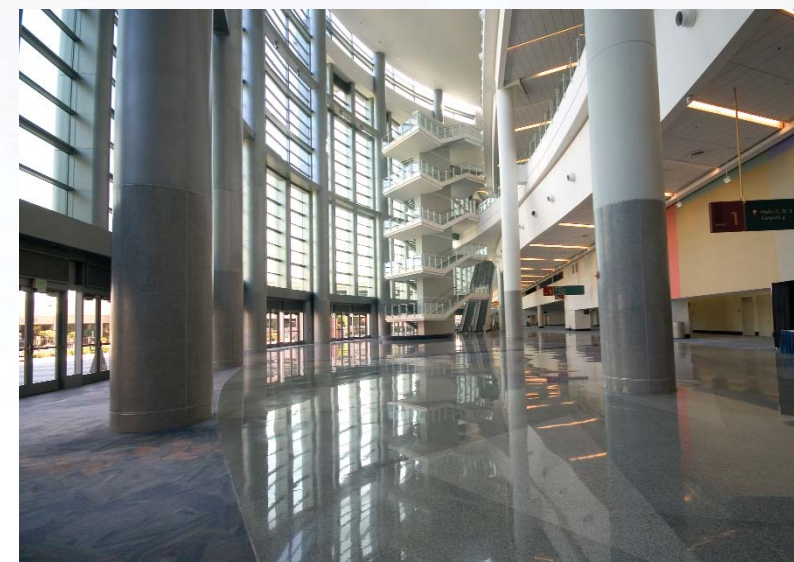
The 3.0 cubic foot C12BB3 backbox is the stiffest and strongest backbox available in the industry.



The C12SQGRL is an attractive square perforated white-painted steel grille.



24-inch, 30-inch and 48-inch channel rails can also be ordered from Community.



CLOUD4 and CLOUD6

4" and 6" High Output Ceiling Systems



The 4-inch CLOUD4 and 6-inch CLOUD6 ceiling loudspeakers from Community are high output devices, intended to meet the needs of the professional sound contractor. Operational in both 16 ohm and 70V formats, the woofer and high output co-axially mounted ¾" tweeter will deliver high quality sound over a wide coverage area. The CLOUD4 and CLOUD6 are complete, self-contained, coaxial, bass-reflex systems featuring all-metal construction.

These high output devices employ a unique and effective proprietary cooling system called Air Gap Technology (AGT), which transfers heat from the gap to maintain top performance even under extreme demand conditions. The basket is cast aluminum, which is not the typical stamped metal type of basket commonly found among other loudspeakers. A series of precision holes found in the aluminum cast basket act as heat transfer points that pull heat from the gap. This, coupled with the gap between the cone and the spider, make this an effective way of maintaining top performance even under extreme demands.

Consisting of aluminum cone woofers and aluminum high output tweeters, the CLOUD4 and CLOUD6 also utilize a built-in 70-volt transformer that offers a variable tap selection switch and a transformer bypass which is selectable by removing the front grille. Enclosed in an all-aluminum bezel assembly with a fully mounted metal sealed backcan using no plastic or ABS parts, the enclosure has removable non-fiberglass damping material inside and white powder coat paint on the outside and comes complete with T-bar supports. Wiring terminations are enclosed in a rear compartment utilizing a smart connect plug, wire restraint, and removable cover plate for ease of installation.



The CLOUD4 and CLOUD6 come complete with all the necessary mounting hardware, and can be flush-mounted into any ceiling type, or alternatively they can be suspended in an open ceiling situation. In addition, a paint cover cap is included which can be used to cover the speaker when painting the bezel and grille to match any ceiling color. Installation couldn't be easier. When flush mounting, the entire installation sequence can be performed from below the ceiling grid. Using the split ring, the loudspeakers are simply pushed up into the mounting hole and secured with four machine screws found under the grille which clamp down the fine machine screw tie down clamps. Also capable of free space installations where architecture is open and flush mounting is not an option, the CLOUD4 and CLOUD6 are equipped with four hang points.

Whether installed flush or free hang, one product will promote consistency and ease when ordering and installing. To make this product even more contractor-friendly, there is an option of ordering the back plate on its own. These can be installed along with the connector. The CLOUD4 or CLOUD6 loudspeaker can then be easily installed at a later date.

The CLOUD4 and CLOUD6 are supplied in pairs, complete with input plates, plug-in termination connectors, T-bars, split-ring supports and paint protectors. Optional support hardware offered with each system includes a drywall rough-in plate, speed saw, and input plates which can be pre-installed to conduit to further accelerate the installation process. These contractor-friendly ceiling speakers offer true ease-of-installation and premium sound. The sound quality has been engineered to be "best-in-class."



- ◆ 4-inch or 6-inch woofer and ¾" aluminum tweeter
- ◆ All-metallic enclosures – no plastic!
- ◆ Aluminum cones & diaphragms



MRC4 and **MRC6** mud rings (rough-in plates) for CLOUD4 and CLOUD6 loudspeakers span 16" centers.



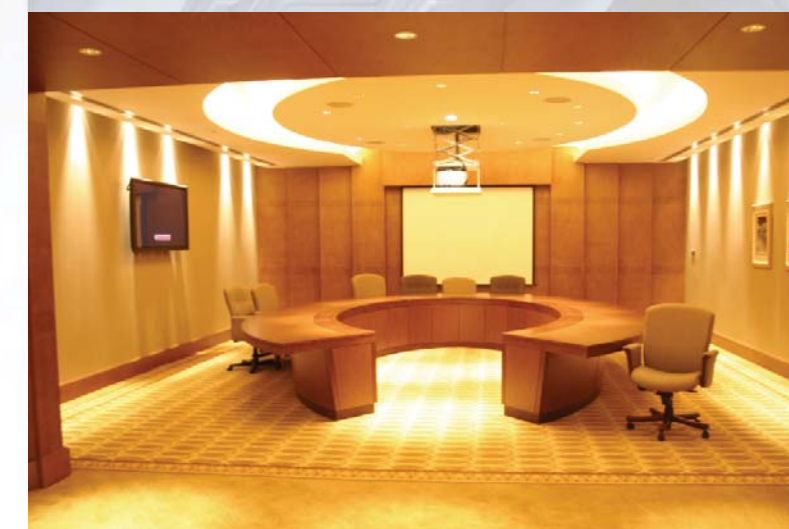
C4IP and **C6IP** input cover plates for CLOUD4 and CLOUD6 are pre-installed to conduit for easy installation.



The **CU-CUTTER** is an optional 2.25"/10" speed saw that cuts perfect holes for 4" to 8" ceiling speakers.

Community CLOUD4 and CLOUD6 loudspeakers are sold in pairs. Each purchase of **CLOUD4-PR** and **CLOUD6-PR** comes complete with the following items:

- ◆ 2 ceiling loudspeakers
- ◆ 2 speaker grilles
- ◆ 2 input plates
- ◆ 2 plug-in termination connectors
- ◆ 4 T-bars
- ◆ 2 split ring supports
- ◆ 2 paint protectors





I/O Series

Indoor/Outdoor

Surface Mount Loudspeakers



The I/O series loudspeakers from Community are low-profile, compact enclosures outfitted with weather resistant polypropylene woofer cones and rust-resistant steel grilles. With dynamic, natural sound quality and excellent intelligibility, the I/O5 and I/O8 are the perfect choice for audio professionals who are looking for compact, high performance speakers for a wide variety of applications, including small clubs, karaoke, playback systems, and monitors. Both models are full-range design providing high power handling, high sensitivity, wide dynamic capability and realistic sound reproduction over their full operation range. In keeping with Community's design philosophy, only the highest quality materials and manufacturing techniques are used.

The I/O5 is a 2-way compact system, ideal for installations where space is at a premium. The 5-inch polypropylene long-excursion mid/bass driver is coupled to a smooth sounding 1/2-inch Mylar diaphragm horn HF unit in a discreet, trapezoidal, high impact, molded enclosure. The I/O5 can easily outperform speakers of a larger size format, and handles a full 60 watts of program power. With excellent intelligibility, the I/O5 is ideal for both music and speech applications.

For installations with more space, the I/O8 provides higher sound pressure levels and greater bass extension, using an 8" polypropylene long-excursion mid/bass driver and a 1/2" Mylar diaphragm horn HF unit. The I/O8 offers higher sensitivity, handles a full 120 watts of program power, and can easily outperform competitive 10-inch format systems.



Both the I/O5 and I/O8 are available with built-in low-loss transformers, designed for high quality audio performance and with installer adjustable taps on the base of the enclosure. The transformer models also have an 8 ohm position in addition to the 70V/100V settings. All I/O loudspeakers are elegantly styled in black or white finishes. Installation is simple and flexible using the included Infin-A-Ball multi-angle wall mounting bracket which allows positioning of the enclosure in exactly the right space and angled for optimum performance.

With appearance that aesthetically merges well in most environments, combined with weather resistant capability suitable for indirect outdoor use, the I/O series can be used in a wide variety of speech and music applications including swimming pools, sports stadiums and facilities, health and fitness clubs, houses of worship, retail environments, cruise ships, educational facilities, corporate A/V, bars and restaurants.



Compact injection molded cabinet, powdercoated steel grilles, and polypropylene LF cones for all-weather use.



Binding post inputs for easy and secure terminations.



The Infin-A-Ball wall mounting bracket included with each speaker allows positioning of the enclosure in exactly the right position.



Optional "T" models feature a base mounted tapping switch and transformer bypass.



Available in elegant black or white finishes.





CLOUD12, CLOUD12T, CLOUD12SUB, CLOUD12SUB-T		
Model	CLOUD12, CLOUD12T	CLOUD12SUB, CLOUD12SUB-T
Loudspeaker Type	2-way, full-range coaxial ceiling system	Ceiling mount subwoofer system
Drivers - LF	12"	12"
HF	1"	N/A
Frequency Response	60 Hz – 18 kHz	45 Hz – 150 Hz
Power Handling (RMS/PGM)	200W / 500W	200W / 500W
Sensitivity 1W/1m	CLOUD1266 / 97 dB, CLOUD1299 / 95 dB	89 dB
Crossover Frequency	2 kHz	120 Hz, 12 dB LPF
Maximum SPL (1m)	CLOUD1266 / 120 dB, CLOUD1299 / 118 dB	112 dB
Nominal Impedance	8 ohms	6 ohms
Nominal Dispersion	60° x 60° or 90° x 90°	360° x 180°
Input Connection	7 terminal barrier strip	2 terminal barrier strip
Enclosure	None	None
Finish	N/A	N/A
70V Transformer Taps (T models only)	200W, 100W, 50W, 25W	200W, 100W, 50W, 25W
Included Accessories	None	None
Optional Accessories	C12BB3: 3.0 cu ft backbox	C12BB3: 3.0 cu ft backbox
	C12SQGRL: square white grille	C12SQGRL: square white grille
	RAIL24-PR: pair of 23.75" channel rails	RAIL24-PR: pair of 23.75" channel rails
Dimensions - HWD	RAIL30-PR: pair of 30" channel rails	RAIL30-PR: pair of 30" channel rails
	CLOUD12: 6.9 x 14.6 x 14.6 in. (176 x 371 x 371 mm)	CLOUD12: 8.5 x 14.6 x 14.6 in. (215.9 x 371 x 371 mm)
	CLOUD12T: 6.9 x 14.6 x 14.6 in. (176 x 371 x 371 mm)	CLOUD12T: 8.5 x 14.6 x 14.6 in. (215.9 x 371 x 371 mm)
Weight	CLOUD12: 17.2 lbs (7.8 kg)	CLOUD12SUB: 18.6 lbs (8.4 kg)
	CLOUD12T: 20.2 lbs (9.2 kg)	CLOUD12SUB-T: 23.1 lbs (10.5 kg)
Shipping Weight	CLOUD12: 21 lbs (9.53 kg)	CLOUD12SUB: 23 lbs (10.4 kg)
	CLOUD12T: 24 lbs (10.9 kg)	CLOUD12SUB-T: 27.5 lbs (12.5 kg)

CLOUD4, CLOUD6		
Model	CLOUD4	CLOUD6
Loudspeaker Type	2-way, full-range coaxial ceiling system	2-way, full-range coaxial ceiling system
Drivers - LF	4"	6"
HF	¾"	¾"
Frequency Response	80 Hz - 20 kHz	60 Hz - 20 kHz
Power Handling (RMS/PGM)	30W / 60W	85W / 170W
Sensitivity 1W/1m	87dB	91 dB
Crossover Frequency	2 kHz	2 kHz
Maximum SPL (1m)	102 dB	110 dB
Nominal Impedance	16 ohms	16 ohms
Nominal Dispersion	145° conical	120° conical
Input Connection	4 terminal phoenix connector	4 terminal phoenix connector
Enclosure	Aluminum bezel, metal backcan	Aluminum bezel, metal backcan
Finish	White powdercoat paint	White powdercoat paint
Transformer Taps	30W, 15W, 7.5W, 3.75W	60W, 30W, 15W, 7.5W
Included Accessories	Input plates, plug-in termination connectors, T-bars, split ring supports, paint protectors	Input plates, plug-in termination connectors, T-bars, split ring supports, paint protectors
Optional Accessories	Mud ring, input cover plate, hole saw cutter	Mud ring, input cover plate, hole saw cutter
Dimensions - HWD	7.8 x 7.9 x 7.9 inches (198 x 201 x 201 mm)	7.6 x 9.9 x 9.9 inches (193 x 252 x 252 mm)
Weight	6.4 lbs (2.9 kg)	8.3 lbs (3.7 kg)
Shipping Weight (Pairs Only)	22 lbs (10 kg)	26 lbs (11.8 kg)

I/O5, I/O5T, I/O8, I/O8T		
Model	I/O5, I/O5T	I/O8, I/O8T
Loudspeaker Type	2-way, full-range, indoor/outdoor loudspeaker	2-way, full-range, indoor/outdoor loudspeaker
Drivers - LF	5"	8"
HF	½"	½"
Frequency Response	85 Hz - 18 kHz	65 Hz - 18 kHz
Power Handling (RMS/PGM)	30W / 60W	60W / 120W
Sensitivity 1W/1m	85 dB	87 dB
Half-space Sensitivity 1W/1m	88dB	90dB
Crossover Frequency	2 kHz	2 kHz
Maximum SPL (1m)	100 dB	106 dB
Nominal Impedance	8 Ohms	8 Ohms
Nominal Dispersion	90° X 50°	90° X 50°
Input Connection	Binding post inputs	Binding post inputs
Enclosure	High impact polypropolene	High impact polypropolene
Finish	Black or white	Black or white
Transformer Taps (T models only)	20W, 10W, 5W / 8 ohm	40W, 20W, 10W / 8 ohm
Included Accessories	Infin-A-Ball wall mounting bracket	Infin-A-Ball wall mounting bracket
Optional Accessories	None	None
Dimensions - HWD	11.2 x 6.6 x 6.4 inches (283 x 167 x 164 mm)	17.7 x 10.4 x 10.2 inches (450 x 265 x 260 mm)
	I/O5: 5.2 lbs (2.4 kg)	I/O8: 14.1 lbs (6.4 kg)
Weight	I/O5T: 6.74 lbs (3.05 kg)	I/O8T: 16.3 lbs (7.4 kg)
	I/O5-PR: 15 lbs (6.8 kg)	I/O8-PR: 39 lbs (17.7 kg)
Shipping Weight (Pairs Only)	I/O5T-PR: 18.5 lbs (8.4 kg)	I/O8T-PR: 44 lbs (20 kg)

Community Professional Loudspeakers 333 East Fifth Street, Chester, PA USA 19013-4511
Tel: 610-876-3400 · 800-523-4934 · Fax: 610-874-0190
www.communitypro.com