

**Community CPL systems are among the most versatile loudspeakers made.**  
The range of products makes the choices easy for your installation, whether it be a 25 seat presentation room, an auditorium seating hundreds, a house of worship with aesthetic and acoustic concerns, or a high output system with subs for a music club.

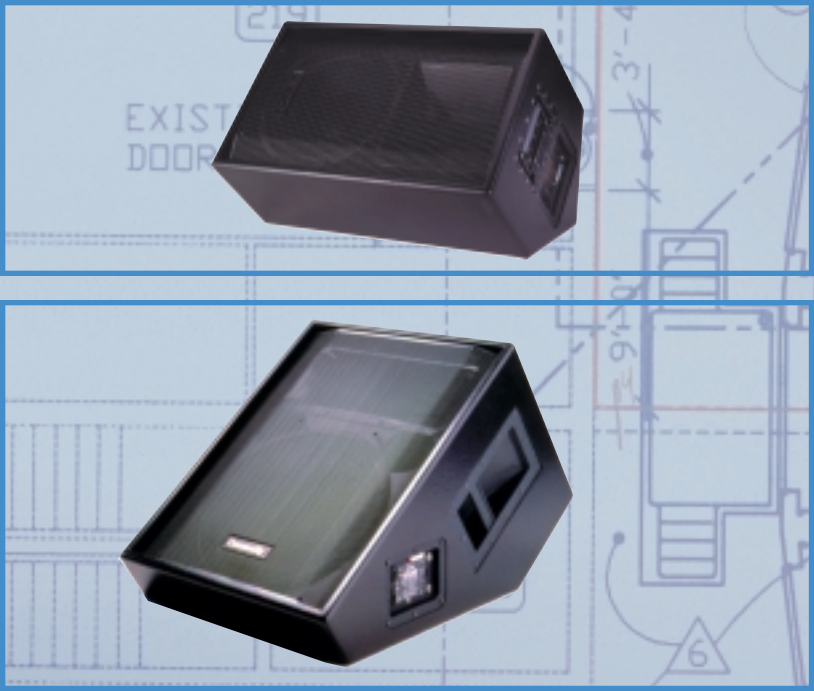
**Each product provides a flexible set of performance options.**  
You can choose single amplifier or biamplified operation. You can adjust the "voicing" of the high frequencies 3 ways. You can choose bracket or suspended installation with the built-in, engineered mounting points. You can rotate the horns of the CPL42 and CPL46 for horizontal mounting. You can install a custom grille cloth. These options are available for CPL systems right out of the box.

**You choose the finish.** All CPL systems are available with a finished black or white painted exterior. For applications requiring custom colors the larger CPL systems can be ordered with an unfinished ready-to-paint enclosure. The ultra-compact CPL23 and CPL27 are magnetically shielded and are available with 70V capability built-in. The CPL42 and CPL43 can be ordered with either a 90° x 40° or 60° x 40° HF horn.

**But, there are a few things you can't choose.** CPLs are supplied only with screw terminal strip inputs for secure, reliable connections. All models have built-in, pre-set PowerSense™ DDP (Dynamic Driver Protection) to absorb excess power. You can't get handles or big splashy logos to upset project aesthetics. You can only have well-braced 13-ply Baltic birch enclosures (CPL23 & CPL27 are MDF) and simple, elegant styling.

And CPL systems are supplied only with the superb performance you expect from Community. This means exceptional vocal clarity, high output, smooth natural response, and controlled coverage.

For ease of installation, an optional eyebolt kit is available for suspending. You can also add optional external 60W or 400W line transformers to the larger systems for higher powered distributed systems.



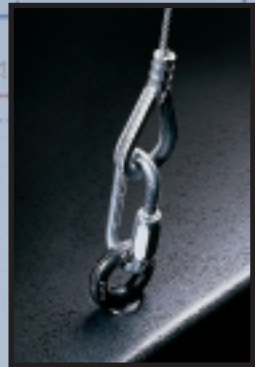
**The companion XLT41E and XLT48E monitor systems are perfect complements to the CPL products.** They have the same range of features except for the mounting provisions. Both are available with 90° x 40° or 60° x 40° HF horns, have built-in passive / biamp switching, HF level control, and the same finish options. Normally used as portable speakers, they are outfitted with Neutrik and 1/4" input connectors, steel handles, and rubber feet.

**XLT41E AND XLT48E MONITOR SYSTEMS**

- CPL - Engineered for high performance - whatever the installation**
- High power, compression HF and Ferrofluid-cooled LF's in optimally ported trapezoidal enclosures
  - CPL23 and CPL27 are magnetically shielded for trouble-free installations
  - Choose 90°x 40° or 60°x 40° coverage
  - Jumper-selectable passive or biamplified operating modes
  - No electronic crossover required for biamplifying or adding a subwoofer
  - HF level switch with 3 positions for different acoustical environments
  - Built-in PowerSense™ DDP protection
  - Barrier strip input connector for ease of installation



- CPL - Ready to install**
- Compact, sturdy, 13-ply Baltic birch construction; CPL23 & CPL27 are tough MDF
  - All models are available in painted black or white; most models available in unfinished wood
  - White and unfinished cabinets have matching cloth-covered grilles already in place
  - Unfinished versions are ready for custom color painting or staining
  - Stylish, acoustically-transparent perforated steel grille protects all drivers
  - All-black baffle boards reduce visibility of driver components



- CPL - Ready to hang**
- Six built-in 3/8-16 rigging points for permanent mounting
  - Rigging points rated for 150 lb (vertical) Working Load Limit
  - Optional accessory with 4 load-rated eyebolts for rigging points
  - CPL42, and CPL43 also have threaded inserts for an Omnimount™ or similar mounting bracket
  - CPL23 and CPL27 have 1/4-20 threaded inserts to use for rigging, a mounting bracket, a stand mount, or the included yoke bracket



MODEL:	CPL23 '1	CPL27 '1	CPL42	CPL43	CPL46	CPL51	CPL55	XLT41E	XLT48E
System Type	2-Way	2-Way	2-Way	2-Way	3-Way	Subwoofer	Subwoofer	2-Way	2-Way
Enclosure Style	Trapezoidal	Trapezoidal	Trapezoidal	Trapezoidal	Trapezoidal	Rectangular	Trapezoidal	Stage Wedge / PA	Stage Wedge
Drivers: LF	8"	2 x 8"	12" <sup>2</sup>	15" <sup>2</sup>	15" <sup>2</sup>	1 x 15" <sup>2</sup>	2 x 15" <sup>2</sup>	15" <sup>2</sup>	15" <sup>2</sup>
MF	n/a	n/a	n/a	n/a	6.5" Cone <sup>2</sup>	n/a	n/a	n/a	n/a
HF	1" Dome	1" Dome	1" Titanium	1" Titanium	1" Titanium	n/a	n/a	1" Titanium	1" Titanium
Freq. Response	70 Hz - 20 kHz	60 Hz - 20 kHz	70 Hz - 18 kHz	50 Hz - 18 kHz	50 Hz - 18 kHz	40 Hz - 250 Hz	40 Hz - 150 Hz	70 Hz - 18 kHz	50 Hz - 18 kHz
Nominal HF Dispersion:	90° x 90°	90° x 90°	90° x 40°	90° x 40°	90° x 40° <sup>3</sup>	n/a	n/a	90° x 40°	90° x 40°
64 Suffix	n/a	n/a	60° x 40°	60° x 40°	n/a			60° x 40°	60° x 40°
Sensitivity (SPL@1W / 1m)	87 dB	86 dB	97 dB (90° x 40°) 99 dB (60° x 40°)	98 dB (90° x 40°) 99 dB (60° x 40°)	97 dB	95 dB	98 dB	97 dB (90° x 40°) 99 dB (60° x 40°)	98 dB (90° x 40°) 99 dB (60° x 40°)
Crossover Frequency	2 kHz	2 kHz	2 kHz	2 kHz	500 Hz 2.5 kHz	150 Hz High pass	150 Hz High pass	2 kHz	2 kHz
Impedance: Passive	8 Ohms	4 Ohms	8 Ohms	8 Ohms	4 Ohms	8 Ohms	4 Ohms	8 Ohms	8 Ohms
Biamp LF	n/a	n/a	8 Ohms	8 Ohms	4 Ohms	n/a	n/a	8 Ohms	8 Ohms
HF	n/a	n/a	8 Ohms	8 Ohms	8 Ohms	n/a	n/a	8 Ohms	8 Ohms
Power: (Continuous / PGM)	100W / 250W	200W / 500W	200W / 500W	200W / 500W	200W / 500W	125W / 300W	300W / 750W	200W / 500W	200W / 500W
Passive	(60W for 70V with 4 taps)	(120W for 70V with 4 taps)	50W / 125W	50W / 125W	80W / 200W	n/a	n/a	200W / 500W	200W / 500W
Biamp LF	Barrier strip	Barrier strip	Barrier strip	Barrier strip	Barrier strip	Barrier strip with high pass output	Barrier strip with high pass output	200W / 500W	200W / 500W
HF	1 x Neutrik NL4MP <sup>4</sup>	Barrier strip	Barrier strip	Barrier strip	Barrier strip	Barrier strip with high pass output	Barrier strip with high pass output	50W / 125W	50W / 125W
Input Connection	1 x Neutrik NL4MP <sup>4</sup>	1 x Neutrik NL4MP <sup>4</sup>	Barrier strip	Barrier strip	Barrier strip	Barrier strip with high pass output	Barrier strip with high pass output	2 x Neutrik NL4MP	2 x Neutrik NL4MP
Rigging Points (150 lb. WLL vertical pull)	6 x 1/4-20 (not rated)	6 x 1/4-20 (not rated)	6 x 3/8-16	6 x 3/8-16	6 x 3/8-16	6 x 3/8-16	6 x 3/8-16	2 x 1/4"	2 x 1/4"
Threaded Mounting Inserts	2 x 1/4-20 for stand adapter or wall bracket	2 x 1/4-20 for stand adapter or wall bracket	2 x 5/16-18 for stand adapter or wall bracket	2 x 5/16-18 for stand adapter or wall bracket	2 x 5/16-18 for stand adapter or wall bracket	3/8" Pole mount	No	No	No
Enclosure	MDF	MDF	13-ply Baltic birch	13-ply Baltic birch	13-ply Baltic birch	13-ply Baltic birch	13-ply Baltic birch	13-ply Baltic birch	13-ply Baltic birch
Handles	Integral rear handle	Integral rear handle	No	No	No	No	No	Spring handle on top	2 Recessed steel bar handles
Finish: B Suffix	Black paint	Black paint	Black paint	Black paint	Black paint	Black paint	Black paint	Black paint	Black paint
W Suffix	White paint	White paint	White paint	White paint	White paint	White paint	White paint	White paint	White paint
U Suffix	n/a	n/a	Unfinished	Unfinished	Unfinished	Unfinished	Unfinished	Unfinished	Unfinished
16 Gauge Perf. Steel Grille:									
B Suffix	Black paint	Black paint	Black paint	Black paint	Black paint	Black paint	Black paint	Black paint	Black paint
W Suffix	White cloth <sup>5</sup>	White cloth <sup>5</sup>	White cloth <sup>5</sup>	White cloth <sup>5</sup>	White cloth <sup>5</sup>	White cloth <sup>5</sup>	White cloth <sup>5</sup>	White cloth <sup>6</sup>	White cloth <sup>6</sup>
U Suffix	n/a	n/a	Brown cloth <sup>5</sup>	Brown cloth <sup>5</sup>	Brown cloth <sup>5</sup>	Brown cloth <sup>5</sup>	Brown cloth <sup>5</sup>	Brown cloth <sup>6</sup>	Brown cloth <sup>6</sup>
Dimensions:									
Height	11.8" (300 mm)	19.5" (496 mm)	23.9" (608 mm)	33.5" (851 mm)	26.5" (673 mm)	26.5" (673 mm)	41.5" (1054 mm)	14.4" (366 mm) <sup>6</sup>	19.3" (490 mm) <sup>6</sup>
W-Front	9.7" (247 mm)	9.7" (247 mm)	14.7" (373 mm)	19.75" (502 mm)	19.75" (502 mm)	19.5" (496 mm)	19.75" (502 mm)	23.9" (608 mm)	19.5" (496 mm)
W-Rear	5.6" (142 mm)	5.6" (142 mm)	9.2" (234 mm)	13" (331 mm)	13" (331 mm)	19.5" (496 mm)	13" (331 mm)	23.9" (608 mm)	19.5" (496 mm)
Depth	12.3" (314 mm)	12.3" (314 mm)	14.75" (375 mm)	17.9" (455 mm)	17.9" (455 mm)	17.9" (455 mm)	17.9" (455 mm)	15.3" (389 mm)	30.9" (785 mm)
Weight	16 lb. (7.3 kg)	24.5 lb. (11.1 kg)	53.5 lb. (24.3 kg)	83 lb. (37.6 kg)	66.5 lb. (30.2 kg)	66.5 lb. (30.2 kg)	89 lb. (40.4 kg)	49.5 lb. (22.5 kg)	60 lb. (27.2 kg)
Mounting Accessories	Yoke bracket included	Yoke bracket included	EYBLTKIT (4 x 3/8" eyebolts)	EYBLTKIT (4 x 3/8" eyebolts)	EYBLTKIT (4 x 3/8" eyebolts)	EYBLTKIT (4 x 3/8" eyebolts)	EYBLTKIT (4 x 3/8" eyebolts)	CSSUPKIT (Steel straps for rigging) SB5 (5 ft x 1-3/8" Pole)	CSSUPKIT (Steel straps for rigging)

1 - Magnetically shielded for AV use. 2 - Ferrofluid-cooled voice coil. 3 - Horns rotatable for horizontal mounting or narrow horizontal & wide vertical coverage. 4 - Neutrik compatible connector not on 70V models. 5 - Replaceable cloth over 16 gauge perforated steel grille. 6 - All dimensions for XLT41E and XLT48E in normal operating position as floor monitors.

# CPL

The Clear Choice for Value  
in Sound Reinforcement  
and Playback Systems

Auditorium

Community Centers

Theater Applications

AV Presentation

House of Worship

Health Club

Music Club

Concourse



333 East 5th Street • Chester, PA USA 19013-4511  
Phone: 610-876-3400 • Fax: 610-874-0190  
Toll-Free: 800-523-4934  
www.community.chester.pa.us