

ENTASYS

HIGH PERFORMANCE COLUMN LINE SOURCE SYSTEMS



Community

APPLICATIONS

- Houses of worship
- Auditoria, live theaters
- Gymnasiums, athletic facilities
- Convention centers, museums
- Meeting rooms and conference rooms
- Airports, train stations, stadium concourses
- Multipurpose venues
- Challenging acoustic spaces
- Architecturally sensitive environments

FEATURES

- 3-way column line-array with true line-array performance to 16 kHz
- **Compact Ribbon Emulator**—Community’s patent-pending technology enables seven 1-inch drivers to effectively produce a single ribbon of energy
- Modular design for versatile coverage, free of unwanted lobes
- Nominal Dispersion: 120° H x 6° or 12° V (user adjustable)
- Weather-resistant for outdoor installation
- Wide frequency range and high output level
- Highly intelligible voice reproduction and excellent musical sound quality
- Stylish, compact and unobtrusive appearance
- Available in standard black or white finishes
- Simple installation using a wide variety of versatile mounting accessories
- Cost-effective, passive design
- Five-year warranty

The ENTASYS Full-Range Column comes from the factory in “CURVED” configuration with a nominal 12° vertical dispersion. For further information on dispersion with different system configurations, reference the Community ENTASYS Application Guide at www.communitypro.com.



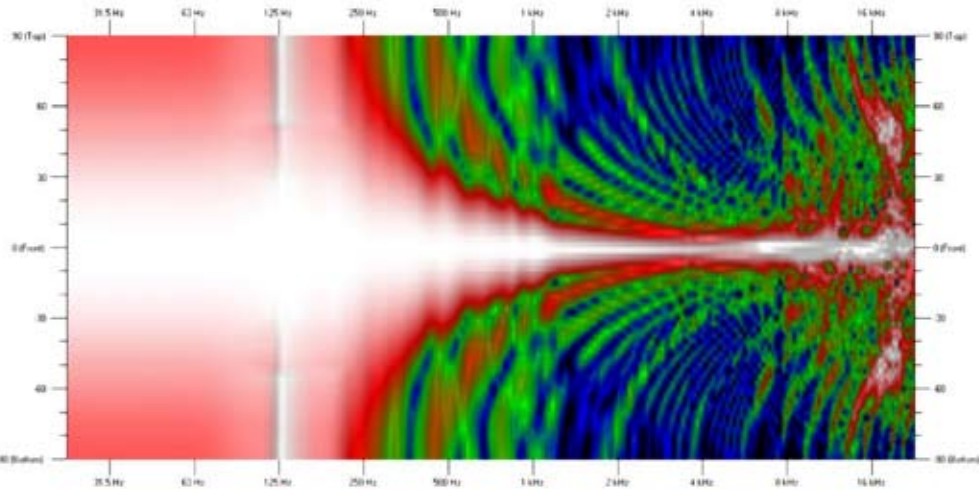
The ENTASYS™ high-performance column line-array loudspeaker system is designed for permanent installation in applications such as auditoria, airports, train stations, conference centers, houses of worship, stadium concourses and museums. ENTASYS features a unique three-way Full-Range Column and a Low Frequency Extension Column in the same size enclosure, offering superior performance, high output and high power handling capability in an architecturally appealing design that is weather-resistant for outdoor installations. Unlike other column products on the market, the ENTASYS system provides consistent horizontal and vertical coverage from 1 kHz to 16 kHz from a single speaker. Particular attention was paid to driver spacing, including the development of a patent-pending Compact Ribbon Emulator, a device that allows seven 1-inch drivers to effectively produce a single ribbon of energy.

ENTASYS systems are designed to be modular, where the Full-Range and Low Frequency modules can be arranged in any order to direct the sound only where it’s needed, and to extend the length of the column to provide additional low frequency pattern control. This modular approach also allows both near-field and far-field coverage lobes to be created, something previously available only with expensive electronically steered arrays.

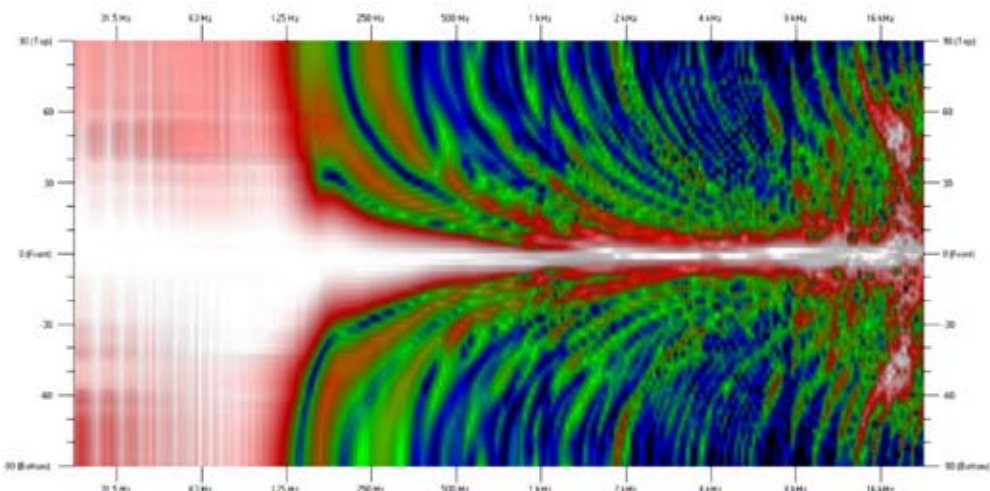
The Full-Range column’s driver complement is six 3.5-inch neodymium LF drivers, eighteen 2.35-inch mid-range drivers, and forty-two 1-inch drivers, mounted on six Compact Ribbon Emulators. The 3.5-inch low frequency transducers have better low frequency extension and power handling (at 600W total) than any other compact line array in its class. The Low Frequency module driver complement is six 3.5-



The compact dual 8-inch VLF208 and dual 12-inch VLF212 are the perfect companion subwoofers to ENTASYS. Additional low frequency extension can also be achieved using Community’s VERIS, iBOX or SBS subwoofers.



SINGLE FULL-RANGE VERTICAL DIRECTIVITY
(1/24 Octave Resolution)



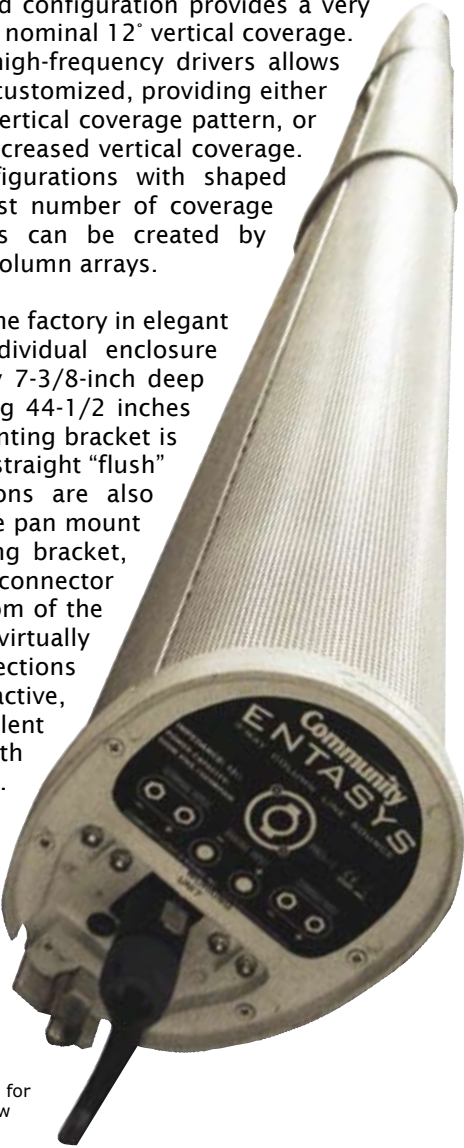
(1) FULL-RANGE, (2) LOW FREQUENCY - VERTICAL DIRECTIVITY
(1/24 Octave Resolution)

inch LF drivers, spaced to minimize destructive interference, and the LF column is fitted with a passive crossover network for seamless integration with the Full-Range unit.

ENTASYS Full-Range columns can also be modified to provide various coverage patterns. The standard, curved configuration provides a very consistent 120° horizontal coverage, and nominal 12° vertical coverage. Changing the spacers under the mid-/high-frequency drivers allows the shape of the coverage pattern to be customized, providing either a straight array with a tight nominal 6° vertical coverage pattern, or an asymmetrically curved pattern with increased vertical coverage. In this fashion, various modular configurations with shaped vertical coverage patterns provide a vast number of coverage combinations. Narrower vertical angles can be created by combining multiple full-range ENTASYS column arrays.

All ENTASYS systems are available from the factory in elegant black or white finishes, with each individual enclosure featuring a compact 5-1/2-inch wide by 7-3/8-inch deep “teardrop” shaped footprint and standing 44-1/2 inches tall. An extremely low-profile T-Bar mounting bracket is included with each ENTASYS column for straight “flush” mounting. Additional mounting options are also available, including an equally low-profile pan mount bracket, a combination pan-tilt mounting bracket, and a fly-kit bracket set. Since the connector panels are situated on the top and bottom of the modules, the assemblies can be installed virtually flush with the wall, with invisible connections between modules. The result is an attractive, cost-competitive system with excellent projection and pattern consistency in both the horizontal and vertical coverage. ENTASYS systems provide excellent intelligibility, feedback rejection, wide frequency response, and additional low frequency extension is available with the addition of Community’s VLF, VERIS, iBOX or SBS subwoofers.

An NL4-compatible locking connector, a dual banana connector and two terminal strips are located on the bottom of each ENTASYS module plus a recessed dual banana connector is mounted into the top cover plate, enabling invisible connections between modules for an aesthetic result. All ENTASYS systems include a low profile T-Bar mounting bracket for virtual flush wall mounting and easy installation.



Available in black or white finishes



Mounting accessories available for simple installation



Stylish, compact, and unobtrusive design

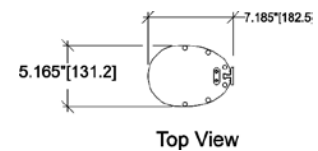
ENTASYS

All ENTASYS performance data was collected by an independent testing lab.

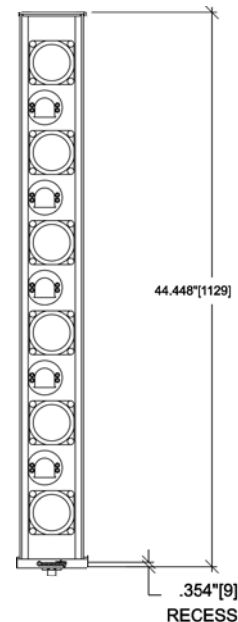
ENTASYS™	Full-Range Three-Way Column	Low Frequency Column
Frequency Response:	200 Hz to 20 kHz	200 Hz to 1.6 kHz
Power Handling:	600W RMS, 1500 PGM	600W RMS, 1500 PGM
Recommended Amplifier:	1200W to 1800W	1200W to 1800W
Sensitivity:	Curved (12° V): 93 dB Straight: (6°V): 95 dB	90 dB
Max SPL (single unit):	Curved (12° V): 120 dB Straight: (6°V): 122 dB	116 dB
Nominal Impedance:	12 ohms	12 ohms
Typical SPL at 100 feet (30 meters):	96 dB	Dependent on LF configuration
Crossover Frequencies:	Mid-frequency: 1 kHz High-frequency: 7 kHz	1.6 kHz Low-Pass
Dispersion** (1 kHz - 16 kHz):	Horizontal: 120° Vertical: 12° or 6° (user configurable)	Using the LF Column(s) enhances vertical pattern control at lower frequencies
Driver Components:	LF: Six 3.5" neodymium MF: Eighteen 2.35" HF: Forty-two 1" (six 7" long by 1" wide patent-pending planar-coupled Compact Ribbon Emulators)	LF: Six 3.5" drivers with optimized spacing, allows extension of the narrow vertical beamwidth into the lower frequencies
Baffle Form:	Configurable: straight, curved, and asymmetric curve	Straight
Input Connection:	Top: (1) Banana (male) Bottom: (1) NL4 locking connector (2) Terminal strip (1) Banana (female)	Top: (1) Banana (male) Bottom: (1) NL4 locking connector (2) Terminal strip (1) Banana (female)
Controls:	None	None
Supplied Accessories:	(1) T-Bar mounting bracket (1) Input wiring cover (1) Top connector cover User configurable vertical coverage adjustment spacers	(1) T-Bar mounting bracket (1) Input wiring cover (1) Top connector cover
Required Accessories:	Digital Signal Processor/ 200 Hz High Pass Filter	Digital Signal Processor/ 200 Hz High Pass Filter
Optional Accessories:	ENT-PB Pan Bracket Kit ENT-PT Pan-Tilt Bracket Kit ENT-FK Fly Kit ENT-CB Coupler Bracket ENT-750T 750W Autoformer	ENT-PB Pan Bracket Kit ENT-PT Pan-Tilt Bracket Kit ENT-FK Fly Kit ENT-CB Coupler Bracket ENT-750T 750W Autoformer
Grille:	Matching black or white metal curved grille	Matching black or white metal curved grille
Enclosure:	Aluminum construction, molded nylon end caps	Aluminum construction, molded nylon end caps
Finish:	Black or white	Black or white
Height:	44.5 inches (1129 mm)	44.5 inches (1129 mm)
Width:	5.5 inches (140 mm)	5.5 inches (140 mm)
Depth:	7.36 inches (187 mm)	7.36 inches (187 mm)
Weight:	40 lbs (18.1 kg)	25 lbs (11.3 kg)

**For further information on dispersion with different system configurations, reference the Community ENTASYS Application Guide at www.communitypro.com.

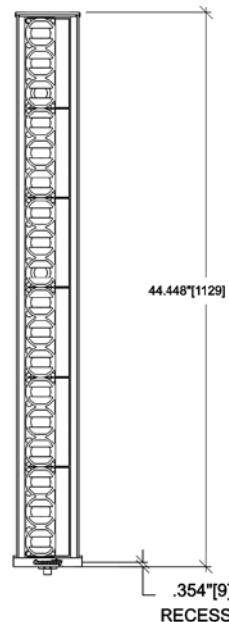
Community strives to improve its products on a continual basis. Specifications are therefore subject to change without notice.



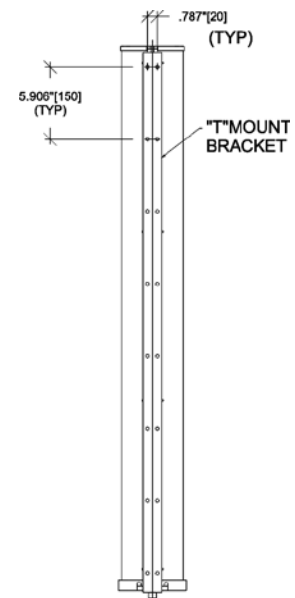
Top View



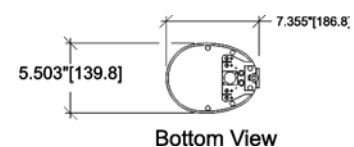
Front View
LF Module
Grille Removed



Front View
Full-Range Module
Grille Removed



Rear View



Bottom View

