

Loudspeakers For Any Application, Sound For All Occasions

Community's family of iBOX components offers 20 different models that can be implemented in arrays, clusters, and distributed configurations. From subwoofers to full-range, horn-loaded cabinets and innovative hardware kits that bring new levels of versatility to any project, now the engineering tools you need to create systems faster, smarter, and more reliably can all be found in one place.

Hear the difference with Community: Sonic excellence known around the globe for over 40 years.

Community Professional Loudspeakers

333 East Fifth Street, Chester, Pennsylvania 19013-4511 U.S.A.

Phone: 610-876-3400 ■ Fax: 610-874-0190

Visit us at: www.communitypro.com

30DEC2009

G Lounge, Pennsylvania, USA

iBOX

INSTALLATION SERIES

Intelligent Choices, Smart Design



Community

Baby Grand, Delaware, USA

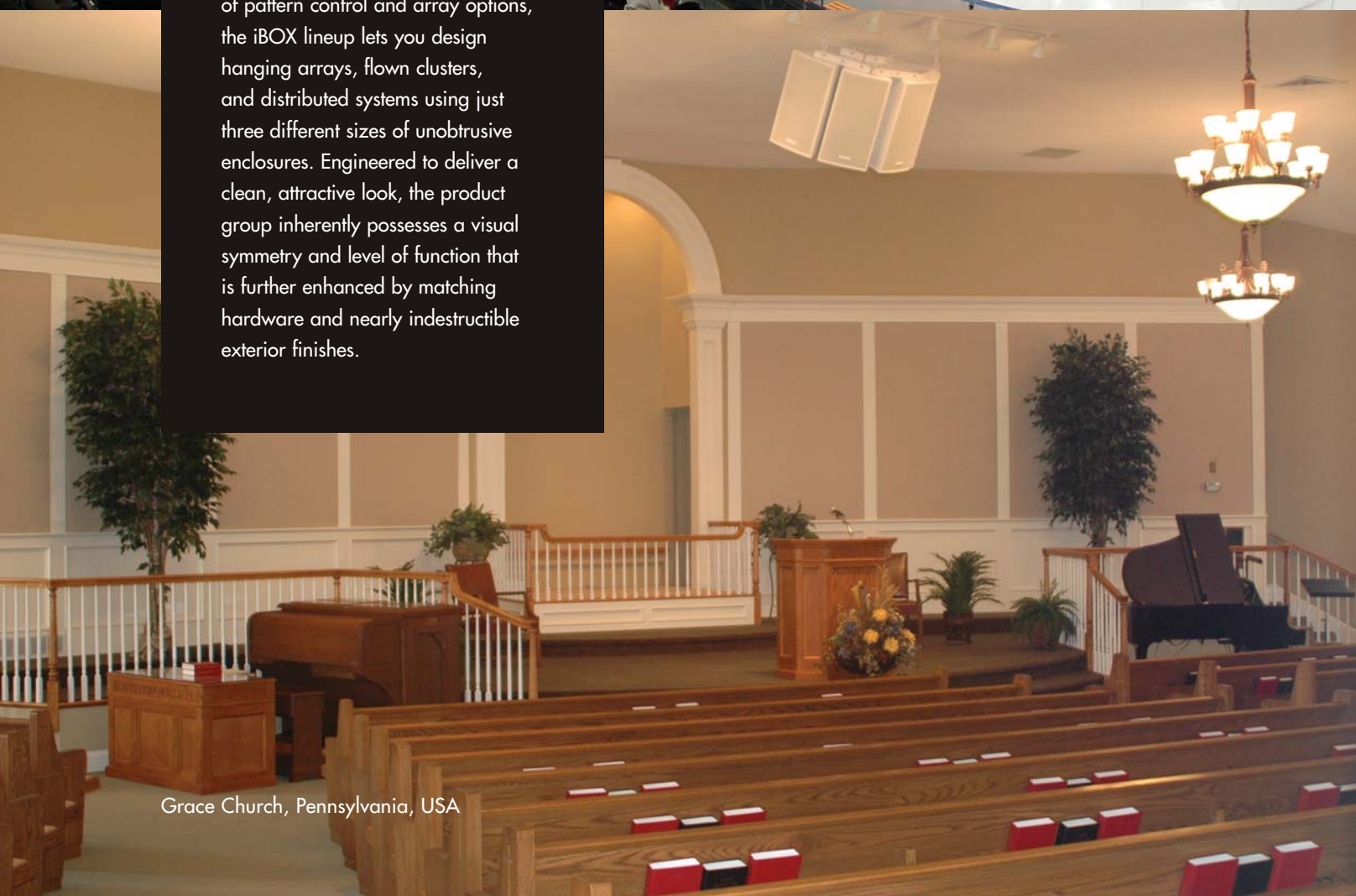
Outstanding Performance In Any Space

Built to facilitate a patently forthright approach to the business of building loudspeaker arrays, Community's iBOX Series provides professional quality ideally suited for use in stadiums, theatres, houses of worship, nightclubs, sporting facilities, live sound venues, and anywhere else premium sound is a prerequisite, not a possibility.

Comprising a wide-ranging number of pattern control and array options, the iBOX lineup lets you design hanging arrays, flown clusters, and distributed systems using just three different sizes of unobtrusive enclosures. Engineered to deliver a clean, attractive look, the product group inherently possesses a visual symmetry and level of function that is further enhanced by matching hardware and nearly indestructible exterior finishes.



Palavela Arena, Turin, Italy



Grace Church, Pennsylvania, USA

Unparalleled Versatility, Sound Value

Comprising two-way, three-way, underbalcony, subwoofer, and weather-resistant models, the iBOX Series brings simplicity to even the most demanding system applications. Designed to save time and money, a comprehensive selection of mounting accessories brings added versatility to the line, making virtually any installation easier. Reliable too, every iBOX enclosure is backed by a five-year warranty.

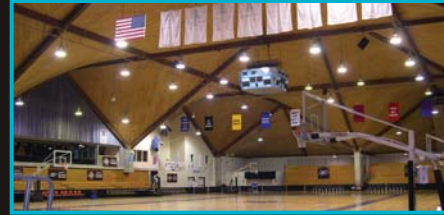


Flamingo Night Club, London, England



Horace Lutheran Church, North Dakota, USA

iBOX INSTALLATION SERIES



iHP1200 Series

Six Models Bring Flexibility to Any Blueprint

Providing precise, uniform coverage in an arrayable package, every member of the iHP1200 Series combines the power of a 12-inch low frequency mid/bass driver with that of a 1.4-inch exit, high frequency compression driver coupled to a rotatable large format horn.

Six full-range models operable in biamp or passive mode from 50 Hz to 18 kHz are each rated at 600W continuous program. A half-dozen different coverage patterns are spread across the line: 40x40 (Model iHP1244), 60x40 (Model iHP1264), 60x60 (Model iHP1266), 90x40 (Model iHP1294), 90x60 (Model iHP1296), and 90x90 (Model iHP1299).

Buttress the low-end of any iHP1200 Series system with one of two dedicated subwoofers, the i112S (outfitted with a single 12-inch Cool-Coil™ woofer) or the i212S, which houses two of the same. Built using enclosures incorporating the same dimensions as the six full-range models, the subs let you create symmetrical, eye-pleasing arrays or clusters using any combination of cabinets.



iHP1500 Series

Expand Your Presence

Available in black, white, or unfinished enclosures just like many other iBOX models, iHP1500 Series components offer rotatable horn sections identical to those found in the iHP1200 Series, starting with the 40x40 iHP1544 and moving up to the 60x40 iHP1564, 60x60 iHP1566, 90x40 iHP1594, 90x60 iHP1596, and 90x90 iHP1599.

Outfitted with a 15-inch low frequency mid/bass driver, every iHP1500 driver complement uses the same 1.4-inch exit compression driver heard within the iHP1200 line. A slightly larger enclosure extends LF response down to 45 Hz. All iHP1500 models are additionally equipped with high order crossovers that further optimize performance. Each cabinet's controlled off-axis response helps expand the aural presence of any combination of iBOX mid/high and subwoofer elements.

A pair of same-dimension subwoofers are part of the iHP1500 Series as well. Model i115S is outfitted with a single 15-inch Cool-Coil™ driver, Model i215S is equipped with a pair.



iHP3500 Series

Step Up to the Next Dimension

Built upon the dimensions of a third enclosure slightly larger again than that used within the iHP1500 Series, the iHP3500 Series comprises the two flagship iBOX offerings, the 60x40 Model iHP3564 and 90x40 Model iHP3594. As three-way, large format systems, each houses a 15-inch high-power low frequency driver, an eight-inch, horn-loaded conical midrange transducer, and the 1.4-inch exit, edgewound voicecoil compression driver used throughout the iBOX line.

High order crossovers, excellent off-axis response, and horn flares that deliver well-controlled dispersion are hallmarks of this iBOX design as well, qualities all further reinforced by the midrange section, which was engineered to maximize vocal quality and musical impact.

In keeping with precedents established in the iHP1200 and iHP1500 Series, a pair of subwoofers—Models i118S and i215LVS—join the iHP3500 family with matching exterior dimensions built to work with any combination of iHP3500 components.



i2W8

Two-way, Full-range Loudspeaker

Perfect for underbalcony fill, foreground music, distributed systems, main cluster downfill, monitor use, and other applications requiring sonic quality suitable for either music or voice reproduction, the i2W8 is a full-range, two-way device employing a pair of eight-inch carbon fiber, ferrofluid-cooled, low frequency transducers and a high frequency titanium driver with a one-inch exit. Centrally mounted in a "Super-V" configuration on a pattern control horn offering ultra-wide 120° horizontal coverage, the LF transducers provide an exceptionally uniform midrange pattern not found in wooden baffle designs.

Finished in either black or white, the i2W8 comes standard with a matching steel yoke to facilitate quick and easy installation, as well as rubber feet for monitor use. A 70V/100V version of the i2W8, the i2W8T comes with a factory-installed 200W autoformer with taps at 200W, 100W, 50W, and 25W.



M12

12-Inch, Two-way Stage Monitor

Stylish and refined in appearance, the 12-inch, two-way M12 professional stage monitor stands an unobtrusive 10.5 inches high and 21.5 inches wide, keeping sightlines clear for both audiences and camera operators in broadcast applications. The bassported system is operable between 55 Hz and 18 kHz, and features switchable biamp/passive functionality.

Housing a 12-inch woofer and two-inch, wideband compression driver mated to an asymmetrical horn that delivers full-range output up close or at a distance, the M12 enclosure is a curvilinear multilayer glass composite protected by a non-reflective, durable finish offered in either black or white. Underneath the cabinet's base plate, dual NL4-compatible locking connectors are neatly tucked away along with molded cable channels and clips that allow users to route cables out the back, sides, or directly onto the top of a stage box without being seen.

Available with or without rubber pocket grip handles or mounting points to better accommodate both installed and portable applications, the award-winning M12 can also be purchased with its HF horn molded into the faceplate to either the left or right of the LF driver.



iLF218 Subwoofer

Start From the Bottom and Build Up

The universal tool for providing any iBOX system with added sub-bass reinforcement, the iLF218 subwoofer delivers phenomenal low-end punch and high output, all with extremely low levels of distortion.

Taking a multifaceted approach to the task of keeping voice coil temperatures low, the iLF218 relies upon ferrofluid to transfer heat from the four-inch voice coils found in each of its pair of 18-inch drivers to the motor structures of each loudspeaker. In turn, Active-Air cooling utilizes the cabinet's bass ports to draw cool, outside air in and over the motor structures. Cone movement aids the process further, driving air through each driver's vented magnet polepiece and once again over the motor structures.

To improve the linearity of the system, Balanced Cone Loading (BCL) balances front and rear air loads. Working in tandem, all of these features combine to stem operating temperatures that reduce output at high volumes.

Available with either a black or white durable finish, the iLF218 additionally features rigid internal bracing that keeps energy loss due to vibration at a bare minimum. A portable version of the cabinet is also offered with handles, rubber feet, and stacking cups.



Modular System Design



Distributed system, densely packed cluster, or flown array... Community's iBOX family can accommodate them all utilizing three unobtrusive enclosure sizes sharing the same profiles and clean looks.

For systems on the move, portable versions of all full-range iBOX models are now offered as well with handles, rubber feet, and stacking cups on four recessed corner mounting points.



Connectors

Dual NL4-compatible locking connectors are found on all iBOX models, along with a safety-covered four terminal barrier strip that facilitates fast, simple, and reliable connections.



Rotatable Horns and Large Scale Horn Flares

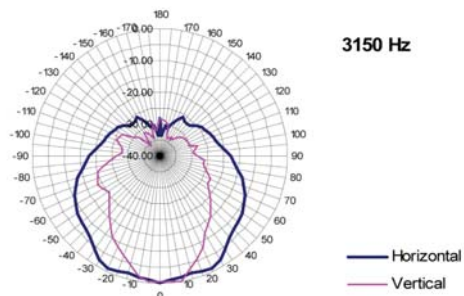


Every installation is different, calling for vertical orientation of the loudspeakers in some instances, and horizontal positioning in others. To meet the needs of any project, iHP1200 and iHP1500 Series full-range enclosures are outfitted with rotatable horn flares that can be easily turned to operate in either a vertical or horizontal configuration.

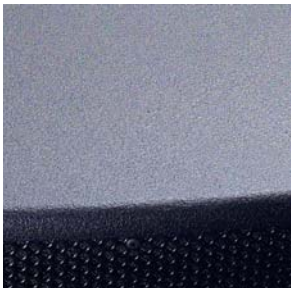
All horn loaded iBOX cabinets are engineered to provide a maximum amount of space for the horn flare as well, a design feature offering unrivaled pattern control in comparison to competitive models.

Dispersion Patterns

With as many as a half dozen dispersion patterns available per enclosure, specifying iBOX loudspeaker systems means never having to compromise any project design.



Finished Enclosures



iBOX enclosures are ruggedly constructed using 13-ply plywood sealed with a nearly indestructible black or white textured finish. All millwork is performed with the aid of the latest CAD/CAM techniques to ensure unrivaled manufacturing consistency and high quality.

High order crossovers come standard as part of each iBOX system. Engineered to provide optimum loudspeaker performance right out of the box, the circuitry reduces off-axis lobing and ensures that uniform coverage is maintained throughout the crossover region.

User selectable crossover functions are operable in either passive or biamp modes on every full-range iBOX loudspeaker. Three-way models are additionally outfitted with a passive crossover network between the high frequency and midband drivers in biamp mode, giving users the option of powering the high frequency/midband and low frequency driver elements separately.

Crossovers in each iBOX component are voiced to erase tonal and sound pressure variations commonly found in lines of loudspeakers employing multiple horn patterns.



Sophisticated Crossover Networks With Selectable Modes



Easy to fly and built expressly to work together, every iBOX loudspeaker shares common dimensions that make it easy to assemble arrays. A total pitch of 30° is found on each enclosure.

Arrayability

A central and inherent part of iHP1200, 1500 and 3500 Series loudspeakers, hardware perfected with easy mounting and installation in mind is based around metric M10 components. Combined with knowledge available from Community's technical support group, an extensive range of mounting options gives users a place from which any design solution can be created.



Hardware



While iBOX loudspeakers are offered with M10 load rated rigging points plus M8 OmniMount™ inserts, some installations may still benefit from Community's Eyebolt Kit as well. Perfect for expanding your palette of rigging and flown array options, each kit contains four black, zinc plated M10 forged eyebolts.

Eyebolt Kit



Horizontal Mounting Yoke

Available in both black and white finishes, three standard U-type mounting yokes are offered for use with iBOX iHP1200, iHP1500, and iHP3500 Series loudspeakers. Model number IB-Y35 should be ordered for use with the 3500 Series, IB-Y15 for the 1500 Series, and IB-Y12 for the 1200 Series.



IB-Y

Vertical Mounting Yoke

Vertical mounting yokes are also offered in three sizes to accommodate iHP1200, iHP1500, and iHP3500 loudspeakers. Each yoke comes with a pair of compound angle plates that attach to the sides of the enclosure, as well as a yoke bracket that fastens to these plates. Ideally suited for theatrical applications, Model IB-VY12 fits the 1200 Series, IB-VY15 is your pick for the 1500 Series, and IB-VY35 is the perfect match for the 3500 Series.



IB-VY

Tight Pack Kit

The process of economically tight-packing a pair of same-size enclosures into a cluster is made simple with the iBOX Tight Pack Kit (Model IB-TPK). Two tight pack plates come with each kit, along with a spacer bracket and four M10 eyebolts. Purchase two kits to tight pack three same-size enclosures; three kits are needed to tight pack four, etc. The Tight Pack Kit should be used with same-sized enclosures in the iHP1200, iHP1500, and iHP3500 Series. Up to a 10° splay between cabinet edges can be created using these kits.



IB-TPK

Universal Planar Kit

The Model IB-UPK Universal Planar Kit lets you create clusters of three enclosures from the iHP1200, iHP1500, or iHP3500 Series. Build a cluster of three same-size enclosures, and gain up to 45° of splay between cabinet edges. Build a cluster of three, different-size, small-large-small cabinets, and get up to 15° of splay between enclosure edges. The kit additionally facilitates flying a large subwoofer between two smaller cabinets, such as an i215LVS flanked by a pair of iHP12s. Each kit provides one planar bracket, two planar angle plates, and three M10 eyebolts.



IB-UPK

Vertical Fly Kit

Vertically array a pair of same-size enclosures with up to 45° of splay between cabinet edges using the Model IB-VFK Vertical Fly Kit. In each kit you'll find one planar angle plate, one tight pack bracket, one flykit spacer bracket, and four M10 eyebolts. A pair of Vertical Fly Kits is required to array three same-size enclosures, three kits are needed for four, and so forth...



IB-VFK

Horizontal Fly Kit

Gain up to 45° of splay between the cabinet edges of a pair of two same-size enclosures with the Model IB-HFK Horizontal Fly Kit. Every kit provides you with two planar spacer plates, two flykit spacer brackets, and four M10 eyebolts. Just like when using other iBOX fly kits, follow this formula for flying larger numbers of cabinets: Use two kits for horizontally arraying three same-size enclosures, three kits for four, and so on.



IB-HFK

Vari-Angle Kit

The Model IB-VAK Vari-Angle Kit lets you fly single enclosures at specific aiming angles. Inside each kit you'll find one hang tab channel and two hang tabs. Offered for use with the iHP1200, iHP1500 and iHP3500 Series, the kit is put to use by simply mounting the hang tab channel directly on top of the enclosure. A standard IB-Y mounting yoke can also be used with the Vari-Angle kit in accordance with the installer's needs.



IB-VAK

Vari-Tilt Kit

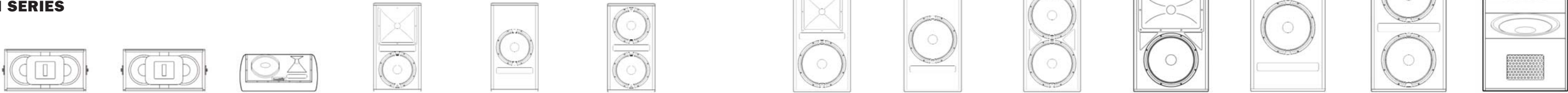
With the Model IB-VTK Vari-Tilt Kit, you can vertically fly two enclosures two high at different horizontal and/or vertical aiming angles. Permitting up to a 60° splay between the bottom edge of the top cabinet and the top edge of the lower cabinet, each kit includes one hang tab channel, two hang tabs, one turnbuckle, and a pair of turnbuckle brackets. The Vari-Tilt Kit can be used with same-size or different-size enclosures from the iHP1200, iHP1500 and iHP3500 Series. A standard U-type yoke (Model IB-Y) must be purchased separately for each enclosure.



IB-VTK

iBOX
INSTALLATION SERIES

Specifications on these pages were gathered in free-field conditions, and measured in anechoic space on a rotator without any processing added. Every aspect of Community's measurement process has been painstakingly optimized to reflect the utmost in accuracy, resulting in honest figures that translate literally and without fault into real world conditions.



Model	i2W8	i2W8T	M12	iHP12	i112S	i212S	iHP15	i115S	i215S	iHP35	i118S	i215LVS	iLF218
Loudspeaker Type Drivers	2-way, Full-range LF 2 x 8" HF 1 x 1"	2-way, Full-range LF 2 x 8" HF 1 x 1"	2-way Stage Monitor LF 1 x 12" HF 1 x 2"	2-way, Full-range LF 1 x 12" HF 1 x 1.4"	Ported Subwoofer LF 1 x 12"	Ported Subwoofer LF 2 x 12"	2-way, Full-range LF 1 x 15" HF 1 x 1.4"	Ported Subwoofer LF 1 x 15"	Ported Subwoofer LF 2 x 15"	3-way, Full-range LF 1 x 15" MF 1 x 8" HF 1 x 1.4"	Ported Subwoofer LF 1 x 18"	Ported Subwoofer LF 2 x 15"	Subwoofer LF 2 x 18"
Frequency Response	65 Hz to 16 kHz	65 Hz to 16 kHz	55 Hz to 18 kHz	50 Hz to 18 kHz	38 Hz to 100 Hz	45 Hz to 100 Hz	45 Hz to 18 Hz	45 Hz to 100 Hz	55 Hz to 100 Hz	45 Hz to 18 kHz	38 Hz to 1000 Hz	35 Hz to 1000 Hz	40 Hz to 125 Hz
Max Input Rating	250W RMS 600W Program	200W, 70V/100V	300W RMS 750W Program	600 RMS 1500W Program	600W RMS 1500W Program	1200W RMS 3000W Program	600W RMS 1500W Program	600W RMS 1500W Program	1200W RMS 3000W Program	600W RMS 1500W Program	600W RMS 1500W Program	1200W RMS 3000W Program	800W RMS 2000W Program
Max Biamp Input Rating	N/A	N/A	LF: 300W RMS, 750 PGM @ 8 Ohms HF: 80W RMS, 160 PGM @ 8 Ohms	LF: 600W RMS, 1500W PGM @ 8 Ohms HF: 90W , 180W PGM @ 8 Ohms	N/A	N/A	LF: 600W RMS, 1500W PGM @ 8 Ohms HF: 90W , 180W PGM @ 8 Ohms	N/A	N/A	LF: 600W RMS, 1500W PGM @ 8 Ohms MF/HF: 100RMS, 250W PGM @ 8 Ohms	N/A	N/A	N/A
Sensitivity	97 dB SPL (100 Hz to 12500 Hz 1/3 octave bands) 98 dB SPL (250 Hz to 4 kHz speech range)	96 dB SPL (100 Hz to 12500 Hz 1/3 octave bands) 97 dB SPL (250 Hz to 4 kHz speech range)	LF: 99 dB HF: 106 dB	iHP1244: 100 dB iHP1264: 99dB iHP1266: 99dB iHP1294: 99dB iHP1296: 99dB iHP1299: 99dB	92 dB	96 dB	iHP1544: 101 dB iHP1564: 100 dB iHP1566: 100 dB iHP1594: 99dB iHP1596: 100 dB iHP1599: 101 dB	97 dB	100 dB	98 dB	97 dB	99 dB	99 dB
Crossover Frequency	1.2 kHz	1.2 kHz	1.5 kHz	(see spec sheet)	N/A	N/A	(see spec sheet)	N/A	N/A	500 Hz / 2 kHz	N/A	N/A	N/A
Maximum SPL	121 dB SPL 128 dB SPL (peak)	119 dB SPL	124 dB SPL 131 dB SPL (peak)	Varies by model (see spec sheet)	120 dB SPL 127 dB SPL (peak)	127 dB SPL 134 dB SPL (peak)	Varies by model (see spec sheet)	125 dB SPL 132 dB SPL (peak)	131 dB SPL 138 dB SPL (peak)	Varies by model (see spec sheet)	125 dB SPL 132 dB SPL (peak)	130 dB SPL 137 dB SPL (peak)	128 dB SPL 135 dB SPL (peak)
Nominal Impedance	8 ohms	25 ohms (200W)	8 ohms	8 ohms	8 ohms	4 ohms	8 ohms	8 ohms	4 ohms	8 ohms	8 ohms	4 ohms	4 ohms
Nominal Dispersion HxV	120° x 60°	120° x 60°	40°-90° x 70° assymetric	iHP1244: 40° x 40° iHP1264: 60° x 40° iHP1266: 60° x 60° iHP1294: 90° x 40° iHP1296: 90° x 60° iHP1299: 90° x 90°	360° x 180°	360° x 180°	iHP1544: 40° x 40° iHP1564: 60° x 40° iHP1566: 60° x 60° iHP1594: 90° x 40° iHP1596: 90° x 60° iHP1599: 90° x 90°	360° x 180°	360° x 180°	iHP3564: 60° x 40° iHP3594: 90° x 40°	360° x 180°	360° x 180°	360° x 180°
Input Connection	(2) NL4MP (2) Terminal Barrier Strip	(5) Terminal Barrier Strip	(2) NL4-compatible locking connectors	(2) NL4-compatible locking connectors (4) Terminal Barrier Strip	(2) NL4-compatible locking connectors (4) Terminal Barrier Strip	(2) NL4-compatible locking connectors (4) Terminal Barrier Strip	(2) NL4-compatible locking connectors (4) Terminal Barrier Strip	(2) NL4-compatible locking connectors (4) Terminal Barrier Strip	(2) NL4-compatible locking connectors (4) Terminal Barrier Strip	(2) NL4-compatible locking connectors (4) Terminal Barrier Strip	(2) NL4-compatible locking connectors (4) Terminal Barrier Strip	(2) NL4-compatible locking connectors (4) Terminal Barrier Strip	(2) NL4-compatible locking connectors (4) Terminal Barrier Strip
Enclosure	13-ply	13-ply	Multilayer glass composite	13-ply 30° total pitch angle	13-ply 30° total pitch angle	13-ply 30° total pitch angle	13-ply 30° total pitch angle	13-ply 30° total pitch angle	13-ply 30° total pitch angle	13-ply 30° total pitch angle	13-ply 30° total pitch angle	13-ply 30° total pitch angle	13-ply
Finish	Black or white	Black or white	Black or white	Black, white, or unfinished	Black, white, or unfinished	Black, white, or unfinished	Black, white, or unfinished	Black, white, or unfinished	Black, white, or unfinished	Black, white, or unfinished	Black, white, or unfinished	Black, white, or unfinished	Black, white, or unfinished
Mounting Provisions	(6) M10 rigging inserts	(6) M10 rigging inserts	N/A	(23) M10 rigging inserts (4) M8 OmniMount™ 120 inserts	(23) M10 rigging inserts (4) M8 OmniMount™ 120 inserts	(23) M10 rigging inserts (4) M8 OmniMount™ 120 inserts	(23) M10 rigging inserts (4) M8 OmniMount™ 120 inserts	(23) M10 rigging inserts (4) M8 OmniMount™ 120 inserts	(23) M10 rigging inserts (4) M8 OmniMount™ 120 inserts	(23) M10 rigging inserts (4) M8 OmniMount™ 240 inserts	(23) M10 rigging inserts (4) M8 OmniMount™ 240 inserts	(23) M10 rigging inserts (4) M8 OmniMount™ 240 inserts	(20) M10 rigging inserts
Required Accessories	Active high pass filter	Active high pass filter	Active high pass filter	Active high pass filter	Active high pass filter	Active high pass filter	Active high pass filter	Active high pass filter	Active high pass filter	Active high pass filter	Active high pass filter	Active high pass filter	Active high pass filter
Dimensions													
Height	11.3 inches (287mm)	11.3 inches (287mm)	10.5 inches (267mm)	30.42 inches (773mm)	30.42 inches (773mm)	30.42 inches (773mm)	33.79 inches (858mm)	33.79 inches (858mm)	33.79 inches (858mm)	36.42 inches (925mm)	36.42 inches (925mm)	36.42 inches (925mm)	22 inches (569mm)
Width - Front	21.75 inches (552mm)	21.75 inches (552mm)	21.5 inches (546mm)	16 inches (407mm)	16 inches (407mm)	16 inches (407mm)	18.26 inches (464mm)	18.26 inches (464mm)	18.26 inches (464mm)	21 inches (533mm)	21 inches (533mm)	21 inches (533mm)	45 inches (1141mm)
Width - Rear	21.75 inches (552mm)	21.75 inches (552mm)	21.5 inches (546mm)	6.8 inches (173mm)	6.8 inches (173mm)	6.8 inches (173mm)	8.26 inches (210mm)	8.3 inches (211mm)	8.3 inches (211mm)	9.9 inches (251mm)	9.9 inches (251mm)	9.9 inches (251mm)	45 inches (1141mm)
Depth	10.4 inches (264mm)	10.4 inches (264mm)	20.75 inches (527mm)	18.26 inches (464mm)	18.26 inches (464mm)	18.26 inches (464mm)	19.86 inches (505mm)	19.86 inches (505mm)	19.86 inches (505mm)	21.99 inches (559mm)	21.99 inches (559mm)	21.99 inches (559mm)	29.8 inches (757mm)
Weight	42 lbs (19 kg)	45 lbs (20 kg)	56 lbs (25.4 kg)	82 lbs (37 kg)	75 lbs (34 kg)	97 lbs (44 kg)	91 lbs (41 kg)	86 lbs (39 kg)	112 lbs (50.8 kg)	123 lbs (55.8 kg)	99 lbs (44.9 kg)	128 lbs (58.1 kg)	215 lbs (97.5 kg)