

SPEAKERS



▲LTO is proud to offer a large and complete range of speakers, fitting with the most different applications in any type of music. You can choose among active and passive speakers, stage monitors, studio monitors, multimedia speakers, plywood painted, plastic, wooden speaker cabinets...

No matter if you use them in a small club, in your Church, outdoor for a Disco Party, on a big stage, inside a Jazz Cafè, you will always find the right answer to your needs, combining technology, reliability, design and great performances.

Every ▲LTO Speaker means Music, Passion, Design.

- MS SERIES
- MULTI-PURPOSE MONITORS
- SR SERIES - PAINTED
- PS SERIES - PLASTICE
- M SERIES - STUDIO MONITOR
- MICRO - MULTIMEDIA SPEAKERS
- ELVIS SERIES - CARPET
- PAM SERIES - PERSONAL MONITOR
- LINE ARRAY



SPEAKERS



MS SERIES

We're proud to introduce our first series of passive loudspeakers, sharing the same speakers technology that made our active speakers worldwide known as reference products. All this series MDF heavy - duty cabinets include our own high quality speakers. In order to adapt their smooth frequency response to each ambient and musical application, we designed the user - friendly MS1 external controller with 16 modelling presets to allow you to achieve the best sonic performances.

Each pair of MS cabinets comes with a stereo MS1 Modeller. Because you are going to use them in a small Club for your duo gigs. Or in a bigger Club with the addition of one or more MS subwoofer. Or outdoor for a small Disco Party. Or on a big stage as side - fill monitors. Or in your local church on the Sunday. And you will use it for rock & roll but you will also use it for Jazz, for Blues and for acoustic instruments in general or you may want to dedicate them for vocals in particularly. Yes, many different environments and many different styles of music and only ▲LTO can give you the flexibility to fulfil all your taste and needs with the same pair of speaker enclosures. Just connect the MS1 in between the mixer and the power amplifier and play with the big knob on the front panel that will give you 16 different "speaker models" Yes, a speaker enclosure with the sound of 16 different ones.

MS1 Stereo Modeller For MS Passive Speaker System

- Stereo Gain Control
- Clip indicator
- Stereo Encoder for select the follows Preset:

FLAT	JAZZ CLUB + SUB
DRUM KICK	VIRTUAL SUB
ANTIRUMBLE	STAGE MONITOR
CONCERT HALL	JAZZ CLUB
ARENA + SUB	CONCERT HALL + SUB
LOUDNESS	DISCO
ROCK & ROLL + SUB	VOCAL
ACOUSTIC	ROCK & ROLL
- Dimensions (HxWxD): 187 x 223 x 62mm (7.4"x8.8"x2.4")
- Weight: 0.8Kg (1.8 lb)



MS12 12" 2-Way Passive Modelling Loudspeaker

- Passive System Type: 2-way vented box
- Continuous Power: 200W AES Standard
- Peak Power: 400W Peak
- Max SPL at 1m: 119dB Nominal / 122dB Peak
- Frequency Response: 65Hz / 20KHz at — 10dB
- Impedance: 8Ω
- Crossover Frequency: 2k5Hz / 12dB / Oct
- Protection: Electronic Dynamic Protection
- Low Frequency Device: 12" woofer / 2" voice coil
- High Frequency Device: 1" Neodymium Driver / 1" voice coil
- Coverage H° x V°: 90° H x 60° V Elliptical Wave Guide
- Connectors: 2 x SPK4 @ Power Input / Link
- Cabinet: Trapezoidal Shape / Composite Wood / Metal Handle / Black Paint finishing
- Dimensions (HxWxD): 650 x 400 x 365mm (25.6"x15.7"x14.4")
- Weight: 19.9Kg (43.9 lb)



SPEAKERS

MS SERIES

MS15 15" 2-Way Passive Modelling Loudspeaker

- Passive System Type: 2-way vented box
- Continuous Power: 300W AES Standard
- Peak Power: 600W Peak
- Max SPL at 1m: 122dB Nominal / 124.5dB Peak
- Frequency Response: 55Hz / 20KHz at — 10dB
- Impedance: 8Ω/4Ω
- Crossover Frequency: 2KHz / 12dB / Oct
- Protection: Electronic Dynamic Protection
- Low Frequency Device: 15" woofer / 2.5" voice coil
- High Frequency Device: 1" Neodymium Driver / 1" voice coil
- Coverage H° x V°: 90° H x 60° V Elliptical Wave Guide
- Connectors: 2 x SPK4 @ Power Input / Link
- Cabinet: Trapezoidal Shape / Composite Wood / Metal Handle / Black Paint finishing
- Dimensions (HxWxD): 750 x 450 x 420mm (29.5"x17.7"x16.5")
- Weight: 25Kg (55.1 lb)



MS152 15" 2-Way Passive Modelling Loudspeaker

- Passive System Type: 2-way vented box
- Continuous Power: 500W AES Standard
- Peak Power: 1000W Peak
- Max SPL at 1m: 127dB Nominal / 130dB Peak
- Frequency Response: 55Hz / 20KHz at — 10dB
- Impedance: 4Ω
- Crossover Frequency: 250Hz - 2KHz / 12dB / Oct
- Protection: Electronic Dynamic Protection
- Low Frequency Device: 2 x 15" woofer / 2.5" voice coil
- High Frequency Device: 1" Driver / 1.35" voice coil
- Coverage H° x V°: 90° H x 60° V Elliptical Wave Guide
- Connectors: 2 x SPK4 @ Power Input / Link
- Cabinet: Trapezoidal Shape / Multi - layer Plywood / Metal Handle / Black Paint finishing
- Dimensions (HxWxD): 1100 x 450 x 443mm (43.3"x17.7"x17.4")
- Weight: 35.7Kg (78.7 lb)



MS153 15" 3-Way Passive Modelling Loudspeaker

- Passive System Type: 3-way vented box
- Continuous Power: 350W AES Standard
- Peak Power: 700W Peak
- Max SPL at 1m: 123dB Nominal / 126dB Peak
- Frequency Response: 50Hz / 20KHz at — 10dB
- Impedance: 8Ω/4Ω
- Crossover Frequency: 700Hz - 3KHz / 12dB / Oct
- Protection: Electronic Dynamic Protection
- Low Frequency Device: 15" woofer / 2.5" voice coil
- Mid Frequency Device: 8" midrange / 2" voice coil
- High Frequency Device: 1" Neodymium Driver / 1" voice coil
- Coverage H° x V°: 90° H x 60° V Dual Wave Guide
- Connectors: 2 x SPK4 @ Power Input / Link
- Cabinet: Trapezoidal Shape / Multi - layer Plywood / Metal Handle / Black Paint finishing
- Dimensions (HxWxD): 900 x 450 x 415mm (35.4"x17.7"x16.3")
- Weight: 30.7Kg (67.6 lb)



SPEAKERS



MS SERIES

MS154 DUAL 15" 3-Way Passive Modelling Loudspeaker

- Passive System Type: 3-way vented box
- Continuous Power: 700W AES Standard
- Peak Power: 1400W Peak
- Max SPL at 1m: 128dB Nominal / 131dB Peak
- Frequency Response: 45Hz / 20KHz at — 10dB
- Impedance: 4Ω
- Crossover Frequency: 700Hz - 3KHz / 12dB / Oct
- Protection: Electronic Dynamic Protection
- Low Frequency Device: 2 x 15" woofer / 2.5" voice coil
- Mid Frequency Device: 8" midrange / 2" voice coil
- High Frequency Device: 1" Driver / 1.35" voice coil
- Coverage H° x V°: 90° H x 45° V Dual Wave Guide
- Connectors: 2 x SPK4 @ Power Input / Link
- Cabinet: Trapezoidal Shape / Multi - layer Plywood / Metal Handle / Black Paint finishing
- Dimensions (HxWxD): 1250 x 450 x 443mm (49.2"x17.7"x17.4")
- Weight: 43.2Kg (95.2 lb)



MS15S 15" Passive Subwoofer

- Passive System Type: Band - Pass
- Continuous Power: 400W AES Standard
- Peak Power: 800W Peak
- Max SPL 1mt: 123dB SPL calculated
- Frequency Response: 45Hz / 200Hz at — 10dB
- Impedance: 4Ω
- Crossover Frequency: 160Hz / 6dB / oct
- Low Frequency Device: 15" woofer / 3" voice coil
- Connectors: 2 x SPK4 @ Power Input / Output
- Cabinet: Multi - layer Plywood / Black painted / metal handle
- Dimensions (HxWxD): 600 x 485 x 600mm (23.6"x19.1"x23.6")
- Net Weight : 34.4kg (75.8 lb)



MS18S 18" Passive Band - Pass Subwoofer

- Passive System Type: Band - Pass
- Continuous Power: 400W AES Standard
- Peak Power: 800W Peak
- Max SPL 1mt: 124dB SPL calculated
- Frequency Response: 35Hz / 200Hz at — 10dB
- Impedance: 4Ω
- Crossover Frequency: 160Hz / 6dB / oct
- Low Frequency Device: 18" woofer / 3" voice coil
- Connectors: 2 x SPK4 @Power Input / Output
- Cabinet: Multi - layer Plywood / Black painted / metal handle
- Dimensions (HxWxD): 730 x 600 x 600mm (28.7"x23.6"x23.6")
- Net Weight: 47.7kg (105.2 lb)



SPEAKERS

MS SERIES

The MS powered speaker cabinets include some quite exclusive innovations such as switch mode power supply and digital power circuitry (in selected models) that make them the lightest powered cabinets of this kind ever made. The small and compact Stage Monitor models are presented with an ultra - dynamic 420 watt amplifier built in while the top model MS 154A includes a digital amplifier able to deliver 1500 watt of power. Both the Stage Monitors and the Full Range models includes another Alto innovation: The MODELLER. Thanks to this circuitry User can select 16 different "sound models" for different taste and Applications. The Alto Modeller offers sound presets especially thought for application with or without subwoofer, for Voice optimised applications, for Disco Music, for Jazz, for Rock & Roll among others.

MS12A 12" 2-Way Active Modelling Loudspeaker

NEW

- Active System Type: 2-way Bi-Amp. with MODELLER
- Low Output Power: 350W (EIAJ)
- High Output Power: 65W (EIAJ)
- Max SPL 1mt: 122dB SPL calculated EIAJ
- Frequency Response: MODELLER presets setting
- Protection Low - High: Analog Limiter
- Low Frequency Device: 12" woofer / 2" voice coil
- High Frequency Device: 1" Neodymium Driver / 1" voice coil
- Coverage H° x V°: 90° H x 60° V Elliptical Wave Guide
- Input Sensitivity: Line + 4dB
- Input Impedance: 30kΩ Balanced / 15kΩ Unbalanced
- Connectors: Input with Combo / Link with XLR
- Cabinet: Trapezoidal Shape / Composite wood / Metal Handle / Black Paint finishing
- External Control: MODELLER with 16 Preset / Line Volume / Clipping LED indicator / Ground Switch
- Dimensions (HxWxD): 650 x 400 x 365mm (25.6"x15.7"x14.4")
- Net Weight: 22kg (48.5 lb)



MS15A 15" 2-Way Active Modelling Loudspeaker

NEW

- Active System Type: 2-way Bi-amp. with MODELLER
- Low Output Power: 350W (EIAJ)
- High Output Power: 65W (EIAJ)
- Max SPL 1mt: 123dB SPL calculated EIAJ
- Frequency Response: MODELLER presets setting
- Protection Low - High: Analog Limiter
- Low Frequency Device: 15" woofer / 2.5" voice coil
- High Frequency Device: 1" Neodymium Driver / 1" voice coil
- Coverage H° x V°: 90° H x 60° V Elliptical Wave Guide
- Input Sensitivity: Line + 4dB
- Input Impedance: 30kΩ Balanced / 15kΩ Unbalanced
- Connectors: Input with Combo / Link with XLR
- Cabinet: Trapezoidal Shape / Composite wood / Metal Handle / Black Paint finishing
- External Control: MODELLER with 16 Preset / Line Volume / Clipping LED indicator / Ground Switch
- Dimensions (HxWxD): 750 x 450 x 420mm (29.5"x17.7"x16.5")
- Net Weight: 27kg (59.5 lb)



SPEAKERS



MS SERIES

MS152A 15" 2-Way Active Modelling Loudspeaker

NEW

- Active System Type: 2-Way Bi-amp. with MODELLER
- Low Output Power: 350W (EIAJ)
- High Output Power: 65W (EIAJ)
- Max SPL 1mt: 126dB SPL calculated EIAJ
- Frequency Response: MODELLER presets setting
- Protection Low - High: Analog Limiter
- Low Frequency Device: 2 x 15" woofer / 2.5" voice coil
- High Frequency Device: 1" Driver / 1.35" voice coil
- Coverage H° x V°: 90° H x 60° V Elliptical Wave Guide
- Input Sensitivity: Line + 4dB
- Input Impedance: 30kΩ Balanced / 15kΩ Unbalanced
- Connectors: Input with Combo / Link with XLR
- Cabinet : Trapezoidal Shape / Multi - layer Plywood / Metal Handle / Black Paint finishing
- External Control: MODELLER with 16 Preset / Line Volume / Clipping LED indicator / Ground Switch
- Dimensions (HxWxD): 1100 x 450 x 443mm (43.3"x17.7"x17.4")
- Net Weight: 37.8kg (83.3 lb)



MS153A 15" 3-Way Active Modelling Loudspeaker

NEW

- Active System Type: 3-Way B-Amp. with MODELLER
- Low Output Power: 500W (EIAJ)
- Mid - High Output Power: 500W (EIAJ)
- Max SPL 1mt: 127dB SPL calculated EIAJ
- Frequency Response: MODELLER presets setting
- Protection Low - High: Analog Limiter
- Low Frequency Device: 15" woofer / 2.5" voice coil
- Mid Frequency Device: 8" midrange / 2" voice coil
- High Frequency Device: 1" Driver / 1.35" voice coil
- Coverage H° x V°: 90° H x 45° V Dual Wave Guide
- Input Sensitivity: Line + 4dB
- Input Impedance: 30kΩ Balanced / 15kΩ Unbalanced
- Connectors: Input with Combo / Link with XLR
- Cabinet: Trapezoidal Shape / Multi - layer Plywood / Metal Handle / Black Paint finishing
- External Control: MODELLER with 16 Preset / Line Volume / Clipping LED indicator / Ground Switch
- Dimensions (HxWxD): 900 x 450 x 415 mm (35.4"x17.7"x16.3")
- Net Weight: 32.8kg (72.2 lb)



SPEAKERS

MS SERIES

MS154A Dual 15" 3-Way Active Modelling Loudspeaker

NEW

- Active System Type: 3-way Bi-Amp. with MODELLER
- Low Output Power: 750W (EIAJ)
- Mid - High Output Power: 750W (EIAJ)
- Max SPL 1mt: 131dB SPL calculated EIAJ
- Frequency Response: MODELLER presets setting
- Protection Low - High: Analog Limiter
- Low Frequency Device: 2 x 15" woofer / 2.5" voice coil
- Mid Frequency Device: 8" midrange / 2" voice coil
- High Frequency Device: 1" Driver / 1.35" voice coil
- Coverage H° x V°: 90° H x 45° V Dual Wave Guide
- Input Sensitivity: Mic - 45dB Line + 4dB
- Input Impedance: 30kΩ Balanced / 15kΩ Unbalanced
- Connectors: Input with Combo / Link with XLR
- Cabinet: Trapezoidal Shape / Multi - layer Plywood / Metal Handle / Black Paint finishing
- External Control: MODELLER with 16 Preset / Line Volume / Clipping LED indicator / Ground Switch
- Dimensions (HxWxD): 1250 x 450 x 443 mm (49.2"x17.7"x17.4")
- Net Weight: 45.3kg (99.9 lb)



MS155A 15" Active Subwoofer

NEW

- Active System Type: Mono Amplifier
- Low Output Power: 500W (EIAJ)
- Max SPL 1mt: 122dB SPL calculated
- Frequency Response: 45Hz / 200Hz at - 10dB
- Crossover Frequency: 160Hz / 6dB / Oct
- Low Frequency Device: 15" woofer / 3" voice coil
- Input Sensitivity: Line + 4dB
- Input Impedance: 30kΩ Balanced / 15kΩ Unbalanced
- Connectors: Input with Combo / Link with XLR
- Cabinet: Multi - layer Plywood / Black Painted / Metal Handle
- External Control: Line Volume / Clipping LED indicator / Ground Switch
- Dimensions (HxWxD): 600 x 480 x 600mm (23.6"x18.9"x23.6")
- Net Weight : 36.5kg (80.5 lb)



MS18SA 18" Active Band - Pass Subwoofer

NEW

- Active System Type: Mono Amplifier
- Low Output Power: 1000W (EIAJ)
- Max SPL 1mt: 126dB SPL calculated
- Frequency Response: 35Hz / 200Hz at -10dB
- Crossover Frequency: 160Hz / 6dB / Oct
- Low Frequency Device: 18" woofer / 3" voice coil
- Input Sensitivity: Line + 4dB
- Input Impedance: 30kΩ Balanced / 15kΩ Unbalanced
- Connectors: Input with Combo / Link with XLR
- Cabinet: Multi - layer Plywood / Black Painted / Metal Handle
- External Control: Line Volume / Clipping LED indicator / Ground Switch
- Dimensions (HxWxD): 730 x 600 x 600mm (28.7"x23.6"x23.6")
- Net Weight: 49.8kg (109.8 lb)



SPEAKERS



MULTI-PURPOSE MONITORS

A quite innovative range of multi - purpose monitors complete the MS line. Available both in passive and active configurations the MS Monitors present some features that until now have been available only in models costing 5 times the price. They make use of reliable yet lightweight coax transducers for a perfect coherent response. They include a compression driver with neodymium magnet assembly. The size is particularly contained to make these Monitors at home with the small stages available in local pubs and bars. Despite their dimensions the MS Monitors deliver an impressive SPL thanks to the built in 420 watt switch - mode power amplifier (MS10A and MS12A). And since we wanted to make them truly "multipurpose" we have included a 16 position speaker modeller with sound models particularly thought for the use on stage and for many other applications.

MS8MA 8" 2-Way Bi-Amp Modelling Speaker Monitors

NEW

- Active System Type: Full Range with MODELLER
- Output Power: 100W (EIAJ)
- Peak Power: 150W (EIAJ)
- Max SPL 1mt: 114dB SPL calculated EIAJ
- Frequency Response: MODELLER presets setting
- Protection Low - High: Analog Limiter
- Low Frequency Device: 8"Dual Cone / 1.5" voice coil
- Coverage H° x V°: 70° H x 70° V
- Input Sensitivity: Line + 4dB
- Input Impedance: 30kΩ Balanced / 15kΩ Unbalanced
- Connectors: Input with Combo / Link with XLR
- Cabinet: Trapezoidal Shape / Multi - layer Plywood / Handle / Black Paint finishing

- External Control: MODELLER with 16 Preset / Line Volume / Clipping LED indicator / Ground Switch
- Dimensions(HxWxD): 210 x 300 x 356mm (8.27"x11.8"x14")
- Net Weight : 7.7kg (17.0 lb)



MS10MA 10" 2-Way Bi-Amp Modelling Speaker Monitors

NEW

- Active System Type: 2-way Bi-Amp. with MODELLER
- Low Output Power: 350W (EIAJ)
- High Output Power: 65W (EIAJ)
- Max SPL 1mt: 120dB SPL calculated EIAJ
- Frequency Response: MODELLER presets setting
- Protection Low - High: Analog Limiter
- Low Frequency Device: 10" Coax / 2" voice coil
- High Frequency Device: 1" Neodymium Driver / 1" voice coil
- Coverage H° x V°: 70° H x 70° V Spherical Horn
- Input Sensitivity: Line + 4dB
- Input Impedance: 30kΩ Balanced / 15kΩ Unbalanced
- Connectors: Input with Combo / Link with XLR
- Cabinet: Trapezoidal Shape / Multi - layer Plywood / Handle / Black Paint finishing

- External Control: MODELLER with 16 Preset / Line Volume / Clipping LED indicator / Ground Switch
- Dimensions (HxWxD): 273 x 362 x 454 mm (10.7"x14.3"x17.9")
- Net Weight: 10.3kg (22.8 lb)



MS12MA 12" 2-Way Bi-Amp Modelling Speaker Monitors

NEW

- Active System Type: 2-way Bi-Amp. with MODELLER
- Low Output Power: 350W (EIAJ)
- High Output Power: 65W (EIAJ)
- Max SPL 1mt: 121dB SPL calculated EIAJ
- Frequency Response: MODELLER presets setting
- Protection Low - High: Analog Limiter
- Low Frequency Device: 12" Coax / 2" voice coil
- High Frequency Device: 1" Neodymium Driver / 1" voice coil
- Coverage H° x V°: 70° H x 70° V Spherical Horn
- Input Sensitivity: Line + 4dB
- Input Impedance: 30kΩ Balanced / 15kΩ Unbalanced
- Connectors: Input with Combo / Link with XLR
- Cabinet: Trapezoidal Shape / Multi - layer Plywood / Handle / Black Paint finishing
- External Control: MODELLER with 16 Preset / Line Volume / Clipping LED indicator / Ground Switch

- Dimensions (HxWxD): 313 x 393 x 513mm (12.3"x15.5"x20.2")
- Net Weight : 11.9kg (26.1 lb)



SPEAKERS

SR SERIES

Our top - end speaker enclosures featuring premium quality transducers, painted plywood and fly points. The SR enclosures include a powerful 40 Bit processor, the same as that equips our renewed MAXIDRIVE processors. This processor includes noise - gate, hum cancel, multiband dynamic processor, every order and every type of Xover and 20 parametric filters. We have also included a 16 - position selector with different sound presets so that you can taste the flexibility of our 40 bit digital processor

SR active series common features:

- Inputs: Mic / Line (Combo connector)
- Controls: Mic Volume, Main Volume, Alto
- 16 - preset digital processor Ground Switch
- Protections: DSP limiter / compressor

SR400A 2-Way Powered Speaker with DSP Module, 12" Woofer, 1.35" Compression Driver

- Amp power: LF: 164W(8Ω), 251W(4Ω) Class H / 164W(8Ω), 251W(4Ω) Class AB
- Frequency response: 55Hz - 20KHz + / - 10dB
- Max SPL @ 1m.: 122dB
- Cabinet: trapezoidal / monitor shap
- Dimensions (HxWxD): 645 x 395 x 385mm (25.4"x15.6"x15.2")
- Weight: 26kg (57.3 lb)



SR500A 2-Way Powered Speaker with DSP Module, 15" Woofer, 1.35" Compression Driver

- Amp power: LF: 232W(8Ω), 382W(4Ω) Class H / 232W(8Ω), 382W(4Ω) Class AB
- Frequency response: 55Hz - 20KHz + / - 10dB
- Max SPL @ 1m.: 125dB
- Cabinet: trapezoidal / monitor shape
- Dimensions (HxWxD): 680 x 455 x 440mm (26.8"x17.9"x17.3")
- Weight: 33.5kg (73.9 lb)



SR500SA Powered 15" Long Excursion Subwoofer with DSP Processor

- Amp power: IF 233W(8Ω), 378W(4Ω) Class H
- Inputs: L / mono - R (XLR connectors)
- Outputs: L - R (XLR connectors)
- Speakers: 15" long excursion woofer
- Frequency response: 45Hz - 200Hz + / - 10dB
- Max SPL @ 1m.: 123.5dB
- Cabinet: dual ports
- Dimensions (HxWxD): 598 x 500 x 600mm (23.5"x19.69"x23.62")
- Weight: 41kg (90.4 lb)



SPEAKERS

PS SERIES

PS series presents complete line of PA cabinets made of strong and durable polypropylene. With models from 8" to 15" and real compression drivers across the line, ▲LTO PS range really offers options for large numbers of Users from low power conference systems to large Live performances. Great attention has been put in details: All models feature trapezoid shape to facilitate the use as floor monitor and several fly points on bottom, top, side and back are provided for any possible fly configuration.

Surprisingly, ▲LTO also introduce 12" and 15" 2 way models with a sophisticated 40 bit DSP built in. Look at the block schematics below and see the amazing flexibility offered by our DSP when compared to a traditional Xover circuit: Our PS4HA and PS5HA models include digital hum cancel, noise gate, multiband dynamic processor, 6 to 48dB Xover, speaker alignment and 20 bands of parametric equalizer (10 for woofer and 10 for tweeter)

The amazing flexibility of our DSP even allowed us to create 3 different preset sound in our top model PS5HA: LIVE with key frequencies emphasized for the best sound reproduction in a live situation. STUDIO, with an astonishing flat frequency response. SUBWOOFER mode, to be used when the unit is connected to an external subwoofer.

PS 4 LITEPACK

12" 2-Way Bi-Amp. with Modeller

NEW

- Low output power: 350W (EIAJ)
- High output power: 65W (EIAJ)
- Max SPL at 1mt: 123dB SPL calculated EIAJ
- Frequency Response: MODELLER presets setting
- Protection LOW - HIGH: Analog Limiter
- Low frequency Device: 12" Neodymium woofer / 2.5" voice coil
- High frequency Device: 1" Neodymium driver / 1.35" voice coil
- Horn coverage H° x V°: 90° H x 45° V
- Input Sensitivity: Line + 4dB
- Input Impedance: 30kΩ Balanced / 15kΩ Unbalanced
- Connectors: Input with Combo / Link with XLR
- Cabinet: Trapezoidal Shape / Plastic Reinforced Cabinet
- External Control: MODELLER with 16 Preset / Line Volume / Clipping LED indicator / Ground Switch
- Dimensions (HxWxD): 660 x 396 x 384mm (26"x15.6"x15.1")
- Net Weight : 17.6kg (38.8 lb)



PS 5 LITEPACK

2-Way Bi-Amp. with Modeller

NEW

- Low output power: 350W (EIAJ)
- High output power: 65W (EIAJ)
- Max SPL at 1mt: 123dB SPL calculated EIAJ
- Frequency response: MODELLER presets setting
- Protection LOW - HIGH: Analog Limiter
- Low frequency Device: 15" Neodymium woofer / 3" voice coil
- High frequency Device: 1" Neodymium driver / 1.35" voice coil
- Horn coverage H° x V°: 90° H x 45° V
- Input Sensitivity: Line + 4dB
- Input impedance: 30kΩ Balanced / 15kΩ Unbalanced
- Connectors: Input with Combo / Link with XLR
- Cabinet: trapezoidal Shape / Plastic Reinforced Cabinet
- External Control: MODELLER with 16 Preset / Line Volume / Clipping LED indicator / Ground Switch
- Dimensions (HxWxD): 660 x 396 x 415mm (26"x15.6"x16.3")
- Net Weight: 20kg (44.1 lb)



SPEAKERS



PS SERIES

PS 5L / PS 5H

2-Way 15" Vented Passive Speaker Cabinets

- Sensitivity at 1 w, 1mt: 98dB SPL
- Frequency response: 55Hz / 20KHz + / - 10dB
- High frequency protection: Electronic Dynamic Protection
- Dimensions (HxWxD): 660 x 396 x 415mm (26"x16"x16.3")

Specifications :	PS 5L	PS 5H
• Continuous power:	250W	400W
• Peak power rating:	500W PEAK	800W PEAK
• Max SPL at 1mt:	122dB SPL	124dB SPL
• Impedance:	8Ω (Nominal)	4Ω (Nominal)
• Crossover frequency:	2200Hz at 12dB / Oct	2000Hz at 12dB / Oct
• Lower frequency:	15" / 385mm - 2.5" voice coil	15" / 385mm - 3" voice coil
• High frequency:	compression driver, 1" voice coil	compression driver, 1.75" voice coil
• Weight:	19.8Kg (43.7 lb)	25.3Kg (55.8 lb)



PS 5LA / PS 5HA

2-Way 15" Vented Active Speaker Cabinets

- Power system type: analogue processor - PS 5LA, digital processor - PS 5HA
- Frequency response: 50Hz / 20KHz + / - 10dB
- Horn Coverage H° x V°: 90° H x 45° V
- Input sensitivity: line + 4 dB / 1.23V
- Input impedance: 30K (Balanced) 15K (Unbalanced)
- Connectors: Input, Jack Link, XLR
- Plastic Reinforced Cabinet: Trapezoidal & Monitor shape
- Dimensions (HxWxD): 660 x 396 x 415mm (26"x16"x16.3")

Specifications :	PS 5LA	PS 5HA
• Low output power:	141W (EIAJ)/108W(RMS)	530W (EIAJ)/364W(RMS)
• High output power:	60W (EIAJ)/45(RMS)	100W (EIAJ)/89W(RMS)
• Max SPL at 1mt:	121dB SPL	124dB SPL
• Impedance:	Low 8Ω - High 8Ω	Low 4Ω - High 8Ω
• Crossover frequency:	Complex EQ processor	2000Hz - DSP Processor
• Protection LOW - HIGH:	Limiter / Compressor plus PTC	DSP lim. / comp. For each section
• Lower frequency:	15" / 385mm - 2.5" voice coil	15" / 385mm - 3" voice coil
• High frequency:	compression driver, 1" voice coil	compression driver, 1.75" voice coil
• Weight:	22.6Kg (49.8 lb)	29Kg (63.9 lb)



PS 4LA / 4HA

2-Way 12" Vented Active Speaker Cabinets

- Powered system type: analogue processor - PS 4LA, digital processor - PS 4HA
- Mic / Line input on combo - XLR link out
- Horn Coverage H° x V°: 90° H x 45° V
- Trapezoidal & Monitor shape
- Dimensions (HxWxD): 660 x 396 x 384mm (26"x15.6"x15.1")

Specifications :	PS 4LA	PS 4HA
• LOW output power:	108W (RMS)/141(EIAJ)	250W (RMS)/392W(EIAJ)
• HIGH output power:	45W(RMS)/56.3W(EIAJ)	81W (RMS)/101W(EIAJ)
• Max SPL at 1m:	119.5dB SPL continuous power	121.5dB SPL continuous power
• Impedance:	Low 8Ω - High 8Ω	Low 4Ω - High 8Ω
• Frequency response:	55Hz / 20KHz + / - 10dB	50Hz / 20KHz + / - 10dB
• Crossover frequency:	2250Hz - Processor	2000Hz - DSP Processor
• Protection Low - High:	Analog limiter / compressor	DSP limiter / compressor
• Low frequency:	12" / 318mm, 2" voice coil	12" / 318mm, 2.5" voice coil
• High frequency:	compression driver, 1" voice coil	compression driver, 1.35" voice coil
• Weight:	19.4Kg (42.8 lb)	23.4Kg (51.6 lb)



SPEAKERS



PS SERIES

PS 4L / 4H 2-Way 12" Vented Passive Speaker Cabinets

- Sensitivity at 1W, 1mt: 97dB SPL
- High frequency protection: Dynamic Protection
- Trapezoidal & Monitor shape
- Dimensions (HxWxD): 660 x 396 x 384mm (26"x15.6"x15.1")

Specifications :	PS 4L	PS 4H
• Continuous power:	180W	250W
• Peak power rating:	360W PEAK	500W PEAK
• Max SPL at 1mt:	119.5dB SPL Continuous Power	121dB SPL Continuous Power
• Impedance:	8Ω (Nominal)	4Ω (Nominal)
• Frequency response:	60Hz / 20KHz + / - 10dB	55Hz / 20KHz + / - 10dB
• Crossover frequency:	2250Hz 12dB / oct	2000Hz 12dB / oct
• Lower frequency:	12" / 318mm, 2" voice coil	12" / 318mm, 2.5" voice coil
• High frequency:	compression driver, 1" voice coil	compression driver, 1.35" voice coil
• Weight:	17.1Kg (37.7 lb)	18.6Kg (41 lb)



PS 2 2-Way 10" Vented Passive Speaker Cabinet

- Continuous power: 120W
- Sensitivity at 1 w, 1mt: 96dB SPL
- Max SPL at 1mt: 117dB SPL
- Impedance: 8Ω (Nominal)
- Peak power rating: 240W PEAK
- Frequency response: 60Hz / 20KHz + / - 10dB
- Crossover frequency: 2450Hz at 12dB / Oct
- Lower frequency: 10" / 266mm - 1.5" voice coil
- High frequency: compression driver, 1" voice coil
- High frequency Protection: Electronic Dynamic Protection
- Dimensions (HxWxD): 595 x 320 x 334.5mm (23.4"x12.6"x13.2")
- Weight: 9.6Kg (21.2 lb)



PS 2A 2-Way 10" Vented Active Speaker Cabinet, 150W

- Power system type: Bi-Amp with analogue processor
- Low output power: 150W (RMS) Bridge class AB
- High output power: 50W (RMS) Bridge class AB
- Max SPL at 1mt: 118dB SPL
- Frequency response: 55Hz / 20KHz + / - 10dB
- Impedance: Low 8Ω - High 8Ω
- Protection LOW-HIGH: Limiter / Compressor plus PTC
- Crossover frequency: Complex EQ processor
- Lower frequency: 10" / 266mm - 1.5" voice coil
- High frequency: compression driver, 1" voice coil
- Horn coverage H° x V°: 90° H x 45° V
- Input sensitivity: line + 4 dB / 1.23V
- Input impedance: 30K (Balanced) 15K (Unbalanced)
- Connectors: Input, Jack Link, XLR
- Plastic Reinforced Cabinet: Trapezoidal & Monitor shape
- Dimensions (HxWxD): 595 x 320 x 334.5mm (23.4"x12.6"x13.2")
- Weight: 12.5Kg (27.6 lb)



SPEAKERS

PS SERIES

PS 3A 2-Way 12" Vented Active Speaker Cabinet

- Power system type: Bi-Amp with analogue processor
- Low output power: 70W (RMS) Class AB
- High output power: 50W (RMS) Class AB
- Max SPL at 1mt: 115.5dB SPL
- Frequency response: 60Hz / 20KHz + / - 10dB
- Impedance: Low 8Ω - High 8Ω
- Crossover frequency: Complex EQ processor
- Protection LOW - HIGH: Limiter / Compressor plus PTC
- Lower frequency: 12" / 318mm - 2" voice coil
- High frequency: compression driver, 1" voice coil
- Horn Coverage H° x V°: 90° H x 45° V
- Input sensitivity: line + 4 dB / 1.23V
- Input impedance: 30K (Balanced) 15K (Unbalanced)
- Connectors: Input, Jack Link, XLR
- Plastic Reinforced Cabinet: Trapezoidal & Monitor shape
- Dimensions (HxWxD): 660 x 396 x 384mm (26"x16"x15.1")
- Weight: 18.4Kg (40.6 lb)



PS 2 TW 2-Way 8" Vented Passive Speaker Cabinet

- Continuous power: 150W
- Sensitivity at 1 w, 1mt: 96dB SPL
- Max SPL at 1mt: 117dB SPL
- Impedance: 8Ω (Nominal)
- Peak power rating: 300W PEAK
- Frequency response: 70Hz / 20KHz + / - 10dB
- Crossover frequency: 3000Hz at 12dB / Oct
- Lower frequency: 8" / 208mm - 1.5" voice coil
- High frequency: compression driver, 1" voice coil
- High frequency Protection: Electronic Dynamic Protection
- Dimensions (HxWxD): 595 x 320 x 334.5mm (23.4"x12.6"x13.2")
- Weight: 13.7Kg (30.2 lb)



PS 2TWA 2-Way 8" Vented Active Speaker Cabinet, 150W

- Power system type: Bi-Amp with analogue processor
- Low output power: 150W (EIAJ)/108(RMS) Bridge Class AB
- High output power: 60W (EIAJ)/45(RMS) Class AB
- Max SPL at 1mt: 118dB SPL
- Frequency response: 65Hz / 20KHz + / - 10dB
- Impedance: Low 8Ω - High 8Ω
- Protection LOW - HIGH: Limiter / Compressor plus PTC
- Crossover frequency: Complex EQ processor
- Lower frequency: 8" / 208mm - 1.5" voice coil
- High frequency: compression driver, 1" voice coil
- Horn coverage H° x V°: 90° H x 45° V
- Input sensitivity: line + 4 dB / 1.23V
- Input impedance: 30K (Balanced) 15K (Unbalanced)
- Connectors: Input, Jack Link, XLR
- Plastic Reinforced Cabinet: Trapezoidal & Monitor shape
- Dimensions (HxWxD): 595 x 320 x 334.5mm (23.4"x12.6"x13.2")
- Weight: 13.8Kg (30.4 lb)



SPEAKERS

M SERIES

Your final product always depends on the final mix. When you use an unreliable monitor to mix your music you put your entire project at risk! Alto's M Series features high - quality components in exceptionally well - made enclosures. M Series monitors deliver accurate, reliable sound and are equipped with near / far field configuration switching so you can tailor your sound environment. The M Series are equally powerful at home in a professional project studio or even with your laptop on the road!



M3A Near - Field Active Monitor

- High performance 1" silk dome tweeter
- 2 x 3" woofers
- High frequency amp: 15W (RMS)
- Low frequency amp: 30W (RMS)
- Activity Blue LED in front panel
- Sensitivity - SPL: 87dB (1W/1m)
- Impedance: 4 Ω (Nominal)
- Max SPL: 104dB
- Shielded magnets
- Dimensions (HxWxD): 216.5 x 143.5 x 152.5mm (8.5"x5.7"x6")
- Weight: 3.6kg (7.9 lb)

M4A Near - Field Active Monitor

- High performance 1" silk dome tweeter
- 2 x 4" woofers
- High frequency amp: 30W (RMS)
- Low frequency amp: 60W (RMS)
- Activity Blue LED in front panel
- Sensitivity - SPL: 92dB (1W/1m)
- Impedance: 4 Ω (Nominal)
- Max SPL: 112dB
- Shielded magnets
- Dimensions (HxWxD): 287.5 x 169 x 201mm (11.3"x6.7"x7.9")
- Weight: 6.5kg (14.3 lb)

M5A Near - Field Active Monitor

- High performance 1" silk dome tweeter
- 2 x 5" woofers
- High frequency amp - 60W (RMS)
- Low frequency amp - 130W (RMS)
- Activity Blue LED in front panel
- Sensitivity - SPL: 95dB (1W/1m)
- Impedance: 4 Ω (Nominal)
- Max SPL: 118dB
- Shielded magnets
- Dimensions (HxWxD): 376 x 223.5 x 267mm (14.8"x8.8"x10.5")
- Weight: 8.3kg (18.3 lb)

SPEAKERS



MICRO - MULTIMEDIA SPEAKERS

For advanced PC audio applications or iPod and MP3. Passive and active version allow users to choose and connect by the performance occasion.

MICRO 3 / 3A

NEW

- High performance 1" silk dome tweeter
- 2 x 3" woofers
- Impedance: 8 Ω (Nominal)
- Power Handling : 30 W
- Sensitivity — SPL: 87 dB (1W/1m)
- Max SPL: 103 dB
- Shielded magnets
- AMP: 50W + 50W (extra) continuous EIAJ for MICRO3A
- Activity blue LED in front panel (MICRO3A)
- Measurement (HxWxD): 216.5 x 143.5 x 152.5mm (8.5"x5.6"x6")
- Net weight: MICRO 3: 2.2Kg (4.9 lb)
MICRO 3A: 3.5Kg (7.7 lb)



MICRO 4 / 4A

NEW

- High performance 1" silk dome tweeter
- 2 x 4" woofers
- Impedance: 4 Ω (Nominal)
- Power Handling : 60 W
- Sensitivity — SPL: 92 dB (1W/1m)
- Max SPL: 101 dB
- Shielded magnets
- AMP: 100W + 100W (extra) continuous EIAJ for MICRO4A
- Activity blue LED in front panel (MICRO4A)
- Measurement (HxWxD): 287.5 x 169 x 201mm (11.3"x6.7"x7.9")
- Net weight: MICRO 4: 4.6Kg (10.1 lb)
MICRO 4A: 6.4Kg (14.1 lb)



SPEAKERS

ELVIS SERIES

An Alto Classic that is still highly demanded by Users worldwide. Amazing in their quality to price ratio the Elvis line ranges from a small 2 way - 10" to the high SPL Elvis 15 XL with dual 15" woofer. All models are available both in active and passive configuration. The active Elvis include a microphone input, a three - band equalizer and a number of electronic protections to save the life of the transducers. The ELVIS 15.2XLA also include a 420 - watt switch - mode amplifier that weights only about 1 Kg making the transportation of the enclosure quite easy. In fact, the total weight of this model is almost the same of the passive version!

ELVIS 10 2-Way Vented Cabinet, 10" Woofer, 1" Compression Driver, Passive Crossover

- Frequency response: 65Hz/20KHz +/— 6dB
- Impedance: 8Ω (Nominal)
- Power handling: 120W CONTINUOUS / 240W PEAK
- Sensitivity(1W/1m): 96dB/116.5dB
- Connectors: 2 x Speakon Input / Link
- Dimensions (HxWxD): 580 x 345 x 305mm
(22.8"x13.6"x12")
- Weight: 14.2Kg (31.2 lb)



ELVIS 12 2-Way Vented Cabinet, 12" Woofer, 1" Compression Driver, Passive Crossover

- Frequency response: 60Hz/20KHz +/— 6dB
- Impedance: 8Ω (Nominal)
- Power handling: 180W CONTINUOUS / 360W PEAK
- Sensitivity(1W/1m): 97dB/119.5dB
- Connectors: 2 x Speakon Input / Link
- Dimensions (HxWxD): 635 x 405 x 340mm
(25"x16"x13.4")
- Weight: 18.3Kg (40.3 lb)



ELVIS 15 2-Way Vented Cabinet, 15" Woofer, 1" Compression Driver, Passive Crossover

- Frequency response: 50Hz - 20KHz + / — 6dB
- Impedance: ELVIS 15: 8Ω (Nominal)
- Power handling: 250W CONTINUOUS / 500W PEAK
- Sensitivity (1W/1m): 98dB/122dB
- Connectors: 2 x Speakon Input / Link
- Dimensions (HxWxD): 700 x 455 x 370mm
(27.6"x17.9"x14.6")
- Weight: 22.8Kg (50.2 lb)



SPEAKERS



ELVIS SERIES

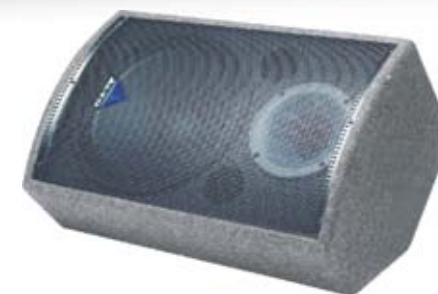
ELVIS 12M 2-Way Vented Cabinet, 12" Woofer, 1" Compression Driver, Passive Crossover

- Frequency response: 75Hz /20KHz +/— 6dB
- Impedance: 8Ω (Nominal)
- Power handling: 180W CONTINUOUS / 360W PEAK
- Sensitivity: Max SPL (1W/1m): 97dB /119dB
- Connectors: 2 x Speakon Input / Link
- Dimensions (HxWxD): 680 x 450 x 370mm
(24.2"x15.7"x13.6")
- Weight: 17.7Kg (39 lb)



ELVIS 15M 2-Way Vented Cabinet, 15" Woofer, 1" Compression Driver, Passive Crossover

- Frequency response: 55Hz/20KHz +/— 6dB
- Impedance: 8Ω (Nominal)
- Power handling: 250W CONTINUOUS / 500W PEAK
- Sensitivity: Max SPL: 98dB (1W/1m) - 122dB
- Connectors: 2 x Speakon Input / Link
- Dimensions (HxWxD): 700 x 455 x 370mm
(27.6"x17.9"x14.6")
- Weight: 22.8Kg (50.2 lb)



ELVIS 12S Vented Cabinet, 12" Subwoofer, Passive Crossover

- Frequency response: 50Hz - 160Hz + / — 6dB
- Impedance: 4Ω (Nominal)
- Power handling: 200W CONTINUOUS / 400W PEAK
- Sensitivity: Max SPL: 97dB (1W/1m) - 119dB
- Connectors: 2 x Speakon Input / Link
- Dimensions (HxWxD): 495 x 400 x 455mm
(19.5"x15.7"x17.9")
- Weight: 23.2Kg (51.1 lb)



ELVIS 15S Vented Cabinet, 15" Subwoofer, Passive Crossover

- Frequency response: 45Hz - 160Hz + / — 6dB
- Impedance: 4Ω (Nominal)
- Power handling: 300W CONTINUOUS / 600W PEAK
- Sensitivity: Max SPL: 98dB (1W/1m) - 122dB
- Connectors: 2 x Speakon Input / Link
- Dimensions (HxWxD): 565 x 455 x 525mm
(22.2"x17.9"x20.7")
- Weight: 29.7Kg (65.5 lb)



SPEAKERS



ELVIS SERIES

ELVIS 15.2XL 3-Way Vented cabinet, 15" Woofer x 2, 1" Compression Driver, Passive Cabinet

- Impedance: 4Ω (Nominal)
- Frequency Response: 55Hz ~ 20KHz + / - 6dB
- Crossover Modes: 3-way passive
- Crossover Frequency: 2200Hz 12dB / oct
- Power Rating: 500W AES standard continuous / 1000W Peak
- Maximum SPL: 128 dB SPL Peak
- System Sensitivity (1W/1m): 101dB / 122dB Max
- Input connector: Four pole connector SPK4
- Dimensions (HxWxD): 1114 x 452 x 449mm
(43.9"x17.8"x17.7")
- Weight: 42.6Kg (93.9 lb)



ELVIS 15.2XLA 2-Way Vented cabinet, 15" Woofer x 2, 1" Compression Driver, Active Cabinet

- Active System Type: 2-way Bi-Amp
- Low Output Power: 350W (EIAJ)
- High Output Power: 65W (EIAJ)
- Max SPL 1mt: 122dB SPL calculated EIAJ
- Frequency Response: 55Hz - 20KHz at - 10dB
- Protection Low - High: Analog Limiter
- Low Frequency Device: 2 x 15" woofer / 2.5" voice coil
- High Frequency Device: 1" Driver / 1" voice coil
- Coverage H° x V° : 80° H x 80° V Spherical Wave Guide
- Input Sensitivity: Line + 4dB
- Input Impedance: 30kΩ Balanced / 15kΩ Unbalanced
- Connectors: Input with Combo / Link with XLR
- Cabinet: Trapezoidal Shape / Particle Board / Plastic Handle / Gray Carpet finishing
- External Control: Line Volume / Clipping LED indicator / Ground Switch
- Dimensions (HxWxD): 1114 x 452 x 449mm
(43.9"x17.8"x17.7")
- Net Weight: 44.4kg (97.9 lb)



SPEAKERS

ELVIS SERIES

ELVIS 10A 2-Way Active Speaker System, 10" Woofer, 1" Compression Driver

- Inputs: Mic / Line (1/4" / XLR Combo connector)
- Controls: Mic Gain, Main Volume, 3 - band EQ (+/- 6dB), Ground Switch
- Amp power: 150W IHF
- Frequency response: 65Hz - 20KHz + / - 6dB
- Max SPL @ 1m.: 117.5dB
- Dimensions (HxWxD): 580 x 345 x 305mm
(22.8"x13.6"x12")
- Weight: 18.2Kg (40.1 lb)



ELVIS 12A 2-Way Active Speaker System, 12" Woofer, 1" Compression Driver

- Inputs: Mic / Line (1/4" / XLR Combo connector)
- Controls: Mic Gain, Main Volume, 3 - band EQ (+/- 6dB), Ground Switch
- Amp power: 250W IHF
- Frequency response: 60Hz - 20KHz + / - 6dB
- Max SPL @ 1m.: 121dB
- Dimensions (HxWxD): 635 x 405 x 340mm
(25"x16"x13.4")
- Weight: 23.1Kg (50.9 lb)



ELVIS 15A 2-Way Active Speaker System, 15" Woofer, 1" Compression Driver

- Inputs: Mic / Line (1/4" / XLR Combo connector)
- Controls: Mic Gain, Main Volume, 3 - band EQ (+/- 6dB), Ground Switch
- Amp power: 350W IHF
- Frequency response: 55Hz - 20KHz + / - 6dB
- Max SPL @ 1m.: 123dB
- Dimensions (HxWxD): 700 x 455 x 370mm
(27.6"x17.9"x14.6")
- Weight: 28.5Kg (62.8 lb)



SPEAKERS

ELVIS SERIES

ELVIS 12SA 12" Subwoofer, Power Amp, Electronic Crossover

- Inputs: L / mono - R (XLR connectors)
- Outputs: L - R (XLR connectors)
- Controls: Main Volume, Stereo / Mono switch, Ground Switch
- Amp power: 250W IHF
- Frequency response: 50Hz - 160Hz + / - 6dB
- Max SPL @ 1m.: 121dB
- Dimensions (HxWxD): 495 x 400 x 455mm
(19.5"x15.7"x17.9")
- Weight: 27.4Kg (60.4 lb)



ELVIS 15SA 15" Subwoofer, Power Amp, Electronic Crossover

- Inputs: L / mono - R (XLR connectors)
- Outputs: L - R (XLR connectors)
- Controls: Main Volume, Stereo / Mono switch, Ground Switch
- Amp power: 350W IHF
- Frequency response: 45Hz - 160Hz + / - 6dB
- Max SPL @ 1m.: 123dB
- Dimensions (HxWxD): 565 x 455 x 525mm
(22.2"x17.9"x20.7")
- Weight: 34.8Kg (76.7 lb)



ELVIS 12MA 2-Way Stage Monitor, 12" Woofer, 1" Compression Driver, Power Amp

- Inputs: Mic / Line (1/4" / XLR Combo connector)
- Controls: Mic Gain, Main Volume, 3 - band EQ (+/- 6dB), Ground Switch
- Amp power: 250W IHF
- Frequency response: 75Hz - 20KHz + / - 6dB
- Max SPL @ 1m.: 121dB
- Dimensions (HxWxD): 615 x 400 x 345mm
(24.2"x15.7"x13.6")
- Weight: 22.5Kg (49.6 lb)



ELVIS 15MA 2-Way Stage Monitor, 15" Woofer, 1" Compression Driver, Power Amp

- Inputs: Mic / Line (1/4" / XLR Combo connector)
- Controls: Mic Gain, Main Volume, 3 - band EQ (+/- 6dB), Ground Switch
- Amp power: 350W IHF
- Frequency response: 55Hz - 20KHz + / - 6dB
- Max SPL @ 1m.: 123dB
- Dimensions (HxWxD): 700 x 455 x 370mm
(27.6"x17.9"x14.6")
- Weight: 29.6Kg (65.2 lb)



SPEAKERS



PAM SERIES

Using heavy duty large magnet assemblies and unique high - power moving coil double - woofer configurations, the PAM Series features injection - moulded cabinets deliver exceptional performance. Suited for a wide range of applications - from compact PA to stage monitoring to surround sound installations the PAM Series monitors - are reliable and sound great in any environment.

PAM5 Passive Personal Monitor

- Power handling: 100W CONTINUOUS / 200W PEAK
- 2 x 5" extended range speakers
- Frequency response: 75Hz - 16KHz @ + / - 10dB
- Max SPL: 114dB @ 1m - 117dB @ 0.5m
- Dimensions (HxWxD): 315 x 195 x 195mm
(12.4"x7.7"x7.7")
- Weight: 4.5kg (9.9 lb)



(BK)



(WH)

PAM5A Amplified Personal Monitor

- Two 5" extended range speakers
- Amplifier: 100W /200W PEAK
- connectors Combo (Mic/Line inputs) RCA (Aux in) XLR (LINK Out)
- Frequency response: 75Hz - 16KHz @ + / - 10dB
- Max SPL: 114dB @ 1m - 120dB @0.5m
- Dimensions (HxWxD): 315 x 195 x 195mm
(12.4"x7.7"x7.7")
- Weight: 5.5kg (12.1 lb)



(BK)



(WH)

SPEAKERS



LINE ARRAY

More and more audio array systems are becoming reference equipment for a daily growing numbers of musicians and users. The great experience in audio field and cabinet design makes ▲LTO proud to introduce the REVO Line Array Audio systems, specifically developed to offer the best audio solutions according to the different music needs. All REVO systems put at your disposal versatile and powerful products, where technology and constant research are the key points. Every ▲LTO Line Array system means Music, Passion, Design.

REVO SUB118P

Vented Subwoofer, Passive or Direct

NEW

- Operating Frequency Range: 37Hz - 200Hz (-10dB)
- Frequency Response: 43Hz - 200Hz (+/- 3dB)
- Maximum Peak SPL: 129 dB SPL calculated EIAJ
- Power Rating (AES Standard): 750W / 1500W
- Transducers Low: 18" Subwoofer, 4" high - power voice coil ceramic magnet, weather resistant cone.
- Crossover modes: Passive, Direct with externally selector in direct connection
- System Sensitivity (1w@1mt): 97dB SPL, passive version
- Nominal Impedance: 8 ohm (nominal)
- Suspension / Mounting: Single 36mm pole socket, four integrated point for line array suspension, two handle, our optional wheel
- Enclosure: 18mm calibrated plywood, black finish, perforated metal grille, silver finish.
- Input Connectors: Two Speakon N - L 4 type, Passive, Input 1 + / 1 - Output 1 + / 1 - Direct 1 + / 1 - (2 SPK parallel) with externally selector
- Dimension (H x W x D): 620 x 620 x 700mm
(24.4" x 24.4" x 27.5")
- Net Weight: 51.8kg (113.4 lb)



SPEAKERS

LINE ARRAY

REVO SAT208P

2-Way, Passive or Bi-Amp, With a Total of Four Speakers Device

NEW

- Operating Frequency Range: 65Hz - 20KHz (-10dB)
- Frequency Response: 77Hz - 18KHz (+/- 3dB)
- Maximum Peak SPL: 126 dB SPL calculated EIAJ
- Power Rating (AES Standard): 400W / 800W passive mode
Bi - Amp Low 400W / 800W
Bi - Amp High 75W / 150W
- Coverage Horizontal: 100° nominal, single unit
- Coverage Vertical: 7.5° variable with array configuration
- Transducers LowMid: 2 x 8" Mid - Bass, 2" high - power voice coil, ceramic magnet, weather resistant cone.
Impedance 16 ohm.
- Transducers High: 2 x 1, 4" Titanium diaphragm, neodymium magnet, 1" exit
Impedance 16 ohm
- Crossover modes: Passive or Bi - Amp with externally selector
High frequency externally level selector, used or Far field (+ 3dB) or Near field (0dB)
- System Sensitivity (1w@1mt): 97dB SPL, passive version
Bi - Amp Low 97 dB (2 device parallel)
Bi - Amp High 107 dB (2 device parallel)
- Nominal Impedance: Passive 8 ohm
Bi - Amp Low 8 ohm (2 device parallel)
Bi - Amp High 8 ohm (2 device parallel)
- Suspension / Mounting: Integrated hardware for suspension in Line Array, dual pole socket, two handle
- Enclosure: 18mm calibrated plywood, black finish, perforated metal grille, silver finish
- Input Connectors: Two Speakon N - L 4 type,
Passive, Input 1 + / 1 - Output 1 + / 1 -
Bi - Amp, Low 1 + / 1 - High 2 + / 2 -
- Dimension (H x W x D): 271.5 x 620 x 423.5mm
(10.7"x24.4"x16.7")
- Net Weight: 21.8kg (48.1 lb)

