

I

GB

A000372
rel. 1.00



SGM[®]

LIGHT TECHNOLOGY

Via Pio La Torre, 1 • 61010 Tavullia (PU), Italy

Tel. +39 0721 476477 • Fax +39 0721 476170

<http://www.sgm.it> • E-mail: info@sgm.it



Victory II 250



Precise and reliable.



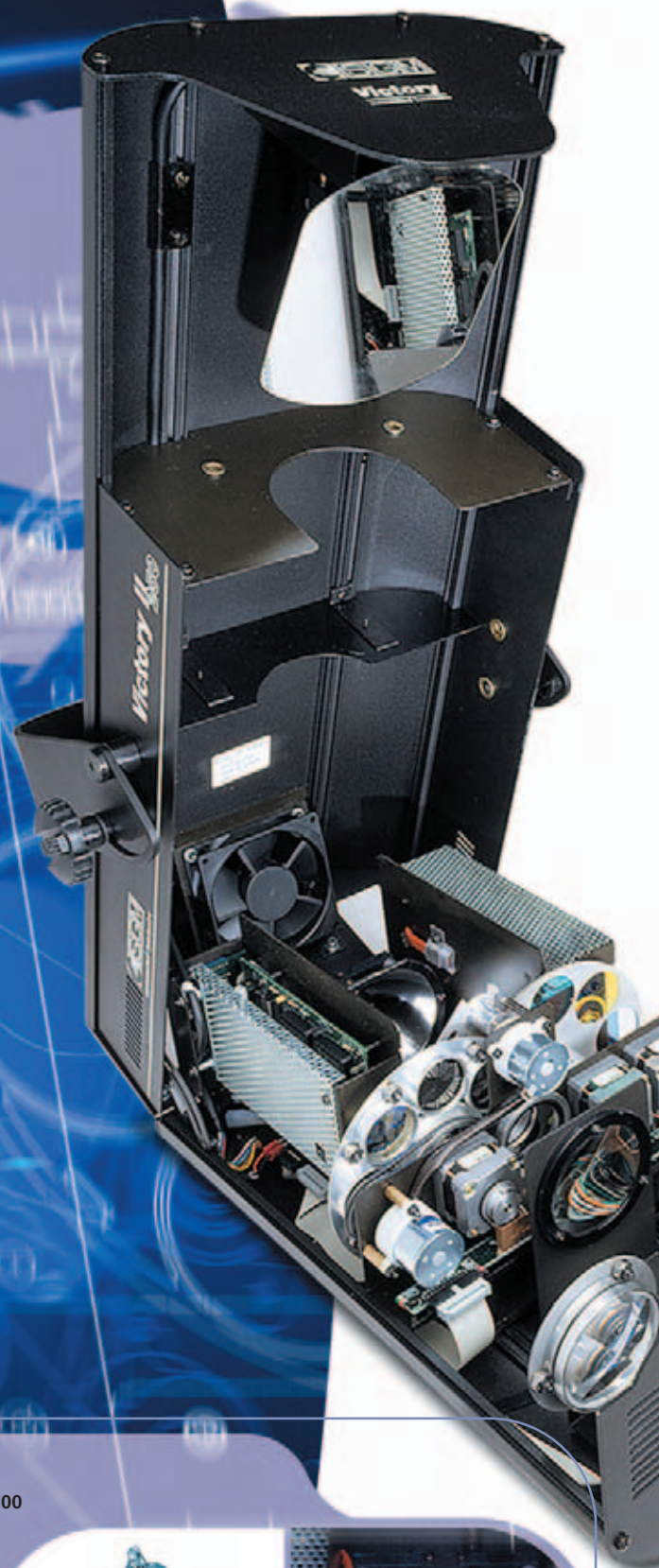
The Victory II 250 is a scanner particularly suited to television applications, thanks to its halogen lamp with a colour temperature of 3,200° K, luminous power of no less than 5,000 lux at 5 metres, and silent operation.

The Victory II 250 is the ideal instrument for projecting a vast range of remarkably high-impact lighting effects in permanent and mobile installations, both in clubs and entertainment venues and at large outdoor events, as well as in high profile entertainment applications - concerts, theatres and television studios.

The Victory II 250 offers 16 colour combinations, two-tone beams and rainbow effect; strobe, frost filter and CTB, a wheel with 7 interchangeable gobos (of which 4 are rotary), and extremely user-friendly maintenance.



Victory II 250



LAMP

The Victory II 250 uses a 250W halogen lamp with a 2-pin G 6.35 base, 9,000 lm/W luminous flux and 3,200°K colour temperature. Definitely the ideal lamp for this type of fixture, thanks to its combination of reliability and long lamp life (approximately 300hr.) with an astonishing luminous power and a ridiculously low price, nowhere near that of other metal halide lamps mounted in fixtures of this kind. The use of a halogen lamp also enables to dim the unit's output from 0 to 100%.



GOBO CHANGE WITH MUSIC SYNC. CONTINUOUS GOBO ROTATION. 4-FACET ROTATING PRISM.
24V 250W HALOGEN LAMP. 300 HOURS LAMP LIFE. 16 OR 8 COLORS. TWO-TONE BEAMS. COLOR CHANGE WITH BLACKOUT

EASY INTERNAL ACCESS

The Victory II 250 has an exclusive opening system for access to internal components.

In fact, although remaining mounted in their operating position, fixtures can be opened exactly in half lengthwise, thus ensuring easy access to internal parts to carry out any work which may be required: cleaning, relamping, filter replacement or anything else.

STROBE / SHUTTER

Victory's strobe effect is very fast for a unit of this category and is obtained by means of an ultra-light steel blade which regulates the rate from 1 to 9 flashes per second and if necessary enables to cut off light output, completely blacking out the scanner.



FOCUSSING

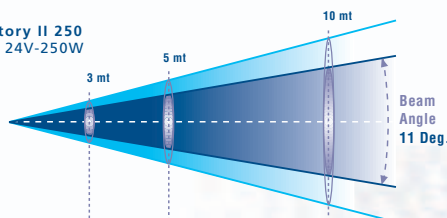
The Victory II 250 is focussed in a very simple, fast and accurate manner, by means of the Focus knob located on the front of the fixture.

Focussing is precise for all gobos, as they're all mounted on the same wheel.

OPTICAL GROUP

The use of a special reflector which concentrates the light beam, specifically designed for the job by SGM's labs, and the use of a condenser lens in selected glass with high transmission coefficient and a special multi-layer anti-reflection coating, guarantee Victory scanners exceptional brightness and remarkable luminous power (5,000 lux at 5 metres).

Unit: Victory II 250
Lamp: HL 24V-250W



Lux Center:	11000	4800	1200
Foot Candles:	1028	448	112
Field size (ø mt):	0.68	1.00	2.10
Field size (ø ft):	2.23	3.28	6.88
Lux Center with Frost:	1800	790	250
Field size with Frost (ø mt)*:	0.90	1.20	2.40
Field size with Frost (ø ft)*:	2.95	3.93	7.87

(*) Calculated at 50% of maximum (beam center) luminous intensity.

7 FIXED GOBOS, 4 ROTATING GOBOS. GOBO CHANGE WITH MUSIC SYNC. CONTINUOUS GOBO ROTATION. 4-FACET ROTATING PRISM. 24V 250W HALOGEN LAMP. 300 HOURS LAMP LIFE. 16 OR 8 COLORS. TWO-TONE BEAMS. COLOR CHANGE WITH BLACKOUT. TILT 90° (0.5 S). 8/16 BIT RESOLUTION. STA. TILT 90° (0.5 S). 8/16 BIT RESOLUTION. STA. 24V 250W HALOGEN LAMP. 300 HOURS LAMP LIFE. 16 OR 8 COLORS. TWO-TONE BEAMS. COLOR CHANGE WITH BLACKOUT. TILT 90° (0.5 S). 8/16 BIT RESOLUTION. STA.

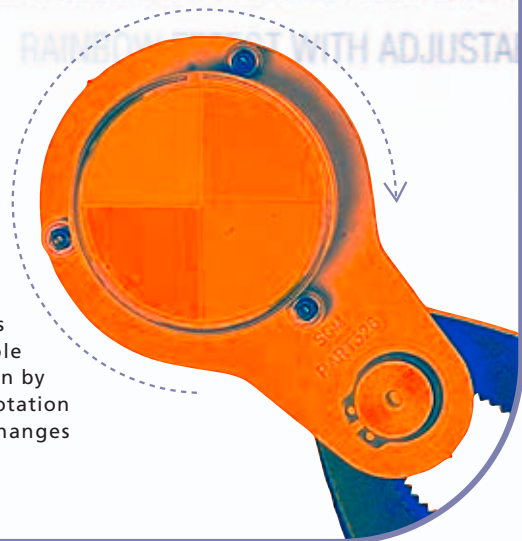
SHUTTER. STROBE 1-9 FLASHES PER SECOND. MANUAL FOCUS. PAN 180° (0.3 S). TILT 90° (0.5 S). 1/16 BIT
UT. ANALOG COLOR CHANGE. COLOR CHANGE WITH MUSIC SYNC. RAINBOW EFFECT WITH ADJUSTABLE SPEED. COLOR CONVERSION FILTER. FI

PRISM

The Victory II 250 fixtures can create truly innovative, interesting graphic and decorative effects, thanks to their 4-facet rotary prism lens.

The prism's rotations speed can be adjusted by the operator.

The fixed and rotary gobos and the rotary prism are totally independent: this allows Lighting Designers to have a considerable number of effects at their disposal, since even by changing just one parameter (gobo/prism rotation direction or speed), the visual effect changes considerably.



COLORS

The Victory II 250 has 8 basic colours (7+white), obtained using top quality dichroic filters carefully selected to ensure perfect colour uniformity.

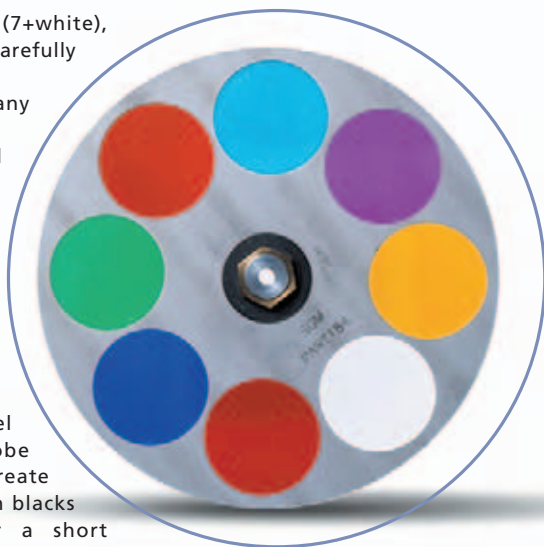
Filters are all easily interchangeable, so any needs for custom colours can also be met.

Colour changes can be run with full colours or 2-tone beams via analog selection.

As well as colour selection, it's also possible to enable some functions with remarkable visual impact, such as running colour changes in sync with music or the rainbow effect obtained by rotating all the available colours at an adjustable speed.

Using the colour channel along with the strobe channel, it's possible to create an autoshade effect which blacks out the projection for a short moment during changeover from one colour to another.

Changeover between colours is imperceptible to the human eye, as this very fast change takes just 0.08 second (the very fastest among fixtures of this category).



BLACKOUT. ANALOG GOBO CHANGE. GOBO CHANGE WITH MUSIC SYNC. CONTINUOUS GOBO ROTATION. 4
AND-ALONE FUNCTIONS. AUTOMATIC POWER CUT-OFF IN THE EVENT OF OVERHEATING OR BREAKDOWN OF THE
STAND-ALONE FUNCTIONS. DMX 512 - RS 232 INPUT SIGNALS. AUTOMATIC POWER CUT OFF IN THE EVENT OF
7,300 HOURS LAMP LIFE. 16 OR 8 COLORS. TWO-TONE BEAMS. COLOR CHANGE WITH BLACKOUT. ANALOG COLOR CHANGE. COLOR CHANGE WITH MUSIC SYNC. RAINBOW EFFECT
GOBOS. 4 ROTATING GOBOS. GOBO CHANGE WITH BLACKOUT. ANALOG GOBO CHANGE. GOBO CHANGE WITH MUSIC SYNC. CONTINUOUS GOBO

COLOUR TEMPERATURE CONVERSION FILTER

Victory II 250 scanners are fitted with a CTB temperature colour conversion filter which enables to double the eight basic colours, thus making 16 colours available.



FROST FILTER

Victory II 250 scanners are fitted with a frost filter with which it's possible to gradually change over the projected image from concentrated to wash beam, ideal for creating backdrops and colour washes.

The frost filter can be used along with the entire range of colours available.

Photo 1:
concentrated beam
(without frost filter).

Photo 2:
wash beam
(with frost filter).



MIRROR

Victory fixtures' mirror is made from the same avant-garde materials used for the Galileo range of scanners, so is extremely reflective and able to reduce luminous output loss to a minimum.



TILT 90°



PAN 180°

The mirror is moved by two fast reliable motors which enable it to tilt 90° in 0.3 seconds and pan through 180° in 0.5 seconds.

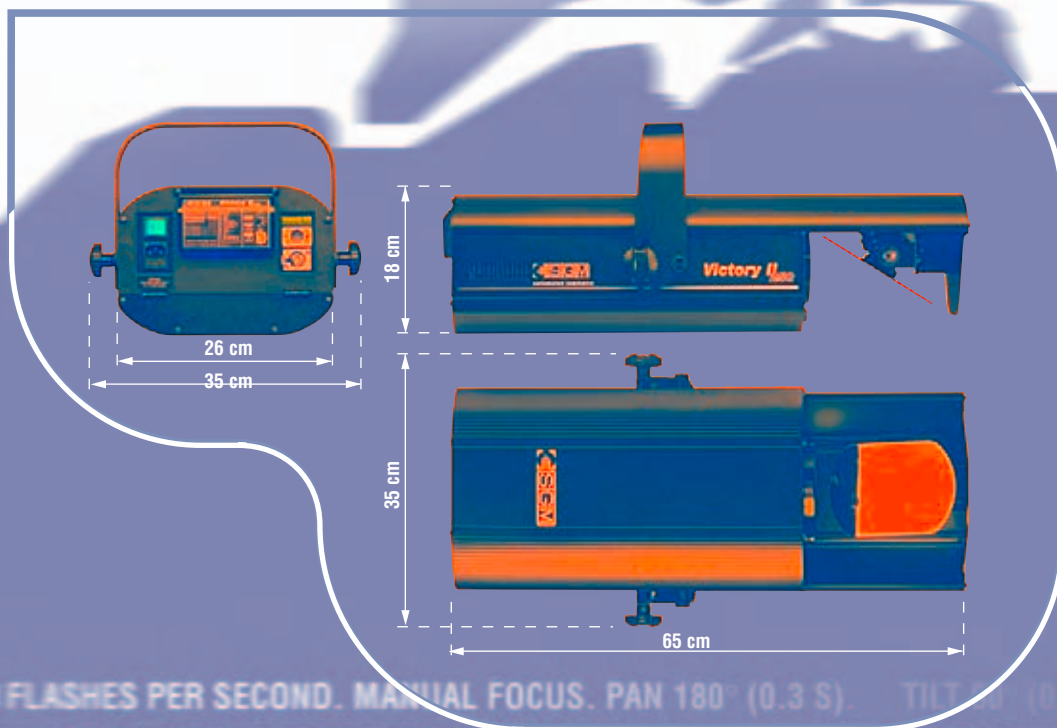


Elaborate software and the use of top quality motors ensure rapid precise movement, which is very smooth even at lower speeds.

The Victory II 250 can also be used with 16-bit control. This function, normally used with more expensive fixtures, guarantees absolutely smooth movement - unbeatable among fixtures in this category.

It's also possible to invert scanning direction, thus enabling problem-free use of fixtures installed facing each other, which would otherwise move in opposite directions.

DMX 512 or RS-232 standard commands are accepted and the Victory II 250 can also be used without a remote control unit, as it has 8 operating programs for free-standing operation exploiting all the fixture's functions and effects.



G O B O S

Victory fixtures' gobo group is made up of a wheel with 7 patterns and a blank space. All gobos are easily replaceable, enabling operators to install new designs easily and rapidly.

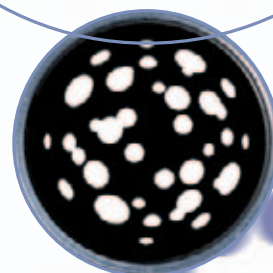
Gobo changes can be carried out in an imperceptibly rapid manner, or analogically with a slow crossover from one image to another. Eye-catching effects are obtained by selecting the function for continuous gobo wheel rotation, which can be set at 4 preset speeds. Gobo changes can be run in sync with the music and carried out with or without blackout.



Thanks to an exclusive system designed by SGM's engineers, gobo rotation is unbeatably smooth and fast.

On the Victory II 250, 4 of the 7 gobo positions are fitted with a mechanism for rotation at adjustable speed in both directions, according to operators' requirements.

Although the Victory units aren't fitted with a mechanical iris, light beam diameter can be reduced using the optional gobos, made for the purpose of narrowing the light beam; apertures with various diameters are available.



SGM puts a wide choice of gobos at operator's disposal, with which it's possible to shape light beams or project images.

The complete library of images consists in three different types: metal gobos, dichro gobos and glass gobos.



CONTROL

Victory scanners' very large number of functions and effects can be controlled by means of an SGM lighting control console, or via any control desk using DMX 512 or RS 232 signals.

STUDIO 24, STUDIO 12, STUDIO 24 SCAN CONTROL AND STUDIO 12 SCAN CONTROL

The Studio range of pro lighting control consoles are the result of the lengthy experience of SGM's Research and Development Centre in manufacturing control equipment, for which it designs the mechanics and electronics entirely in-house, also availing themselves of suggestions and advice from operators who use these desks daily and explained their real hands-on working requirements.

They're available in 24 or 12 - channel configuration, controlled via two rows of faders for manual presets and one row for memory registers. Scan Control versions are fitted with a universal controller for DMX units (moving head fixtures, scanners, colourchangers and dimmers).

They're also fitted with an RS-232 interface for connection to a PC, a MIDI interface with In-Thru-Out ports, an input for SMPTE sync signals, audio input, built-in microphone and scene change via up-down pedal.

PILOT 2000

Everything was studied and designed on this unit with a view to easy installation and use, from the lines of the chassis which enable it to be used for both rack mounting (four 19" rack units) or as a desktop controller, to the complete personalization of functions and controls.

Pilot 2000 is definitely one of the most versatile controllers available on the market today and is able to control 512 channels using DMX 512 serial digital signals. Of these, a maximum of 192 channels can be configured as dimmer channels. In any case, it's possible to configure 40 intelligent fixtures that use a maximum of 36 channels each (the overall channel limit obviously remains 512). Moving fixtures are positioned using a twin co-ordinate system: absolute, by means of a joystick and relative via cursor keys, ensuring perfectly precise positioning.

The logic adopted uses an extremely powerful microprocessor of the latest generation, which also allows control software to be rapidly upgraded via the unit's RS-232 input.

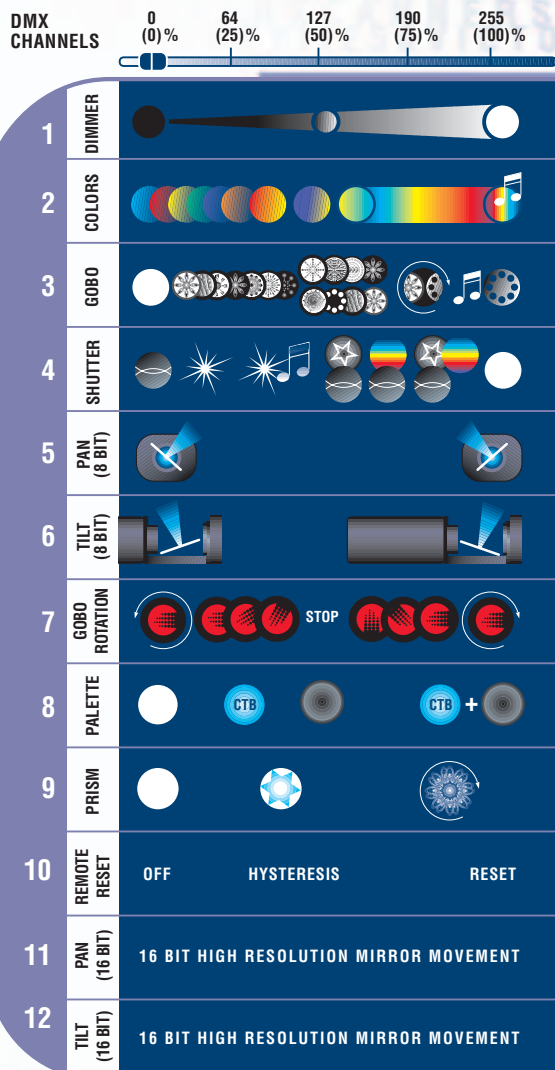


ACCESSORIES FLIGHT CASE COD. 006-1734

Sturdy flight cases have been purposely designed and built to ensure Victory scanners complete protection against knocks during transport and storage.

A double flight case is also available on request.

VICTORY II 250



TECHNICAL SPECIFICATIONS

Lamp	24V 250W halogen lamp
Lamp life (hours)	300
Colors	16
Two - tone beams	•
Color change with blackout	•
Analog color change	•
Color change with music sync.	•
Rainbow effect with adjustable speed	•
CTB color conversion filter	•
Frost filter	7
Fixed gobos	4
Rotating gobos	•
Gobo change with blackout	•
Analog gobo change	•
Gobo change with music sync	•
Continuous gobo rotation	•
4-facet rotating prism	•
Shutter	•
Strobe 1-9 flashes per second	•
Manual focus	•
Pan	180° (0,5 s)
Tilt	90° (0,3 s)
8/16 bit resolution	•
Stand-alone functions	•
Channels	10 (12 with 16 bit)
DMX 512 – RS 232 input signals	•
Power supply	220V o 110V AC 50/60Hz
Automatic power cut-off in the event of overheating or breakdown of the cooling system	•
Dimensions (HxLxD)	18x65x35 cm (7.1x25.6x13.8 in)
Weight	14 Kg (30.9 lb.)

VICTORY II 250

24V 250W halogen lamp
300
16
•
•
•
•
•
•
7
4
•
•
•
•
•
•
•
•
•
180° (0,5 s)
90° (0,3 s)
•
•
10 (12 with 16 bit)
•
220V o 110V AC 50/60Hz
•
18x65x35 cm (7.1x25.6x13.8 in)
14 Kg (30.9 lb.)

SGM reserves the right to change specifications without notice